

www.lamex.com

Shanghai
上海(中国总部)
2-5/F, Lei Shing International Plaza,
No.1319, Yanan Road (W), Shanghai, PRC
中国上海市延安西路1319号利星国际广场2-5楼 邮政编码 200050
Tel : (86) 21 6278 8888 Fax : (86) 21 6278 7399

Beijing
北京
2/F, China Merchants Tower, 118 Jian Guo Road, Beijing, PRC
中国北京市建国路118号招商局大厦2楼 邮政编码 100022
Tel : (86) 10 8521 7588 Fax : (86) 10 6566 9838

Hong Kong
中国香港
22/F, Prosperity Millennia Plaza,
663 King's Road, North Point, Hong Kong
中国香港北角英皇道663号泓富产业千禧广场22楼
Tel : (852) 2828 6888 Fax : (852) 2827 6788

Dongguan Manufacturing Campus & Showroom with LEED™ CI GOLD
东莞生产中心及 LEED™ CI 金奖展厅

5/F, Lian Hu First Industrial District, 191 Huan Shi East Road, Tangxia Town, Dongguan, Guangdong Province, PRC
中国广东省东莞市塘厦镇环市东路191号莲湖第一工业区美时工厂综合大楼5楼 邮政编码 523715

Customer Service Hotline/客户服务热线
Mainland China/中国大陆 : (86) 800 820 6073
Hong Kong & Rest of Asia /香港及亚太区 : (852) 2828 6000

Allsteel_chair_2013_02



PERFORMANCE 品质无瑕 合作无间
IS PARTNERSHIP

Acuity™



AcuFit™

AcuFit™ 动态平衡倾仰控制

The conforming mesh back, contoured seat cushion, and weight-activated mechanism work in synergy to recognize how your body can function at its optimum and adapt accordingly.

贴身网背，贴合人体曲线的坐垫与体重感知机关完美契合，辨识用户的最佳体态，自动调整并给予最好的支持。



Conforming mesh back with optional upholstered jacket

贴身网背配备可供选择的椅外套

The mesh back mirrors the natural curves of the spine, providing snug ergonomic support to the shoulders and lumbar region. Mechanical dynamics in the materials and structure of the carrier promote healthy posture by allowing just the right amount of flex. The optional slip-on jacket offers premium visual appeal when facing clients; however, simply removing it returns you to everyday comfort.

独特的网背设计贴合腰椎自然曲线，为肩部和腰部提供符合人体工学的舒适支撑。背部支撑的结构和材质具有促进人体健康坐姿的功能，配合人体的弯曲和移动。座椅配上座椅外套更显高档优雅，尤其适合会见客户之时。用户只需轻松卸下座椅外套，可使时尚舒适的网背座椅重现。

Hybrid seat cushion

双重记忆海绵垫

A customized hybrid cushion brings immediate comfort and allows you to sit pleasantly for hours at a time.

个性定制的双重记忆海绵垫，带来即刻和持久的舒适。

Weight-activated mechanism

体重感知机关

Acuity achieves perfect balance and support by sensing your body weight and adjusting its recline tension and back-and-forth motions accordingly.

自动根据使用者的体重差异，调节倾仰拉力和前后移动，从而达到最佳平衡状态。





1 Eight-way positioning
Armrests move up and down, in and out, back and forth as well as pivot and lock into place.

八向调节
扶手可进行上下、前后、左右调节及锁定。



2 Fit-to-body
Adjust the seat depth and height with an easy-to-use function that's conveniently located at the seat's edge.

适合不同身体形态
座椅的高度及深度调节可通过位于座垫边的滑动调节轻松实现。



3 Fit-to-task
A simple slide function locks, tightens, or loosens the tilt of the seat and recline tension for maximum comfort.

适合不同工作状态
座椅锁定和倾仰拉力的幅度可通过简易的滑动调节实现，以达到最佳的舒适感。

Acuity™

Clearly Sharp. Clearly Comfortable. 绝对时尚，绝对舒适

Designed in collaboration with Bruce Fifield of Milan-based Design Continuum Italia, Acuity effectively blends ergonomics with elegance into a stylish seat that promotes excellent posture and productivity. Its intuitive features adapt immediately to your body shape and workplace needs, providing physical reinforcement that inspires your best performance.

Acuity由意大利著名设计师Bruce Fifield设计，这款时尚的座椅将人体工程学与优雅元素有效融合，帮助用户保持良好坐姿，提升工作效率。其直观简便的设计可迅速适应人体身形与工作空间的需求，提供恰到好处的支撑，激发用户的工作绩效。

Statement of Line 详细说明

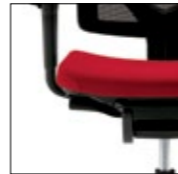


Model 型号	Description 描述	H 高度 (mm)	D 深度 (mm)	W 宽度 (mm)	SH 座高 (mm)
AWMPGDNO.PAL.2.P / AWMPTLNO.PAL.2.P	Mesh back, polished aluminum chassis and base 网背椅，抛光铝托架及抛光铝五星爪	1041.4 – 1181.1	635	663.6	425.5 – 552.5
AWMGGDNO.P71.2.B / AWMGTLNO.P71.2.B	Mesh back, graphite chassis and black polymer base 网背椅，石墨色托架及黑色五星爪	1041.4 – 1181.1	635	663.6	425.5 – 552.5
AW(F/L)PGDNO.PAL.2.P / AW(F/L)PTLNO.PAL.2.P	Mesh back w/ jacket, polished aluminum chassis and base 网背椅带背套，抛光铝托架及抛光铝五星爪	1041.4 – 1181.1	635	663.6	425.5 – 552.5
AW(F/L)GGDNO.P71.2.B / AW(F/L)GTLNO.P71.2.B	Mesh back w/ jacket, graphite chassis and black polymer base 网背椅带背套，石墨色托架及黑色五星爪	1041.4 – 1181.1	635	663.6	425.5 – 552.5



1 Body Adaptive Control™
A weight-sensing, synchronized tilt mechanism is combined with a pivoting back that aligns with the natural curves of the spine, encouraging healthy movement throughout the day.

身体适应控制
重力感应、同步倾仰机关与枢轴转动椅背结合，贴合人体背部曲线，提供恰到好处的支撑，有助于用户全天的健康移动。



2 Quick Tension™ lever
Choose the amount of effort you would like in your recline function in order to comfortably maneuver to your preferred level of support. Five settings spanning low to high tension allow for easy adjustment throughout the day, affording you customized support for different tasks.

快速拉力控制杆
选择倾仰时的拉力水平，以达到需要的最佳支撑。用户能方便的调节从低到高五档力度，满足不同的承重需求。



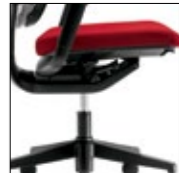
3 Height-adjustable lumbar support
Customize your lumbar support anywhere within a 4" range.

可调节腰脊承托
在4英寸范围内，用户可移动调节自己的腰脊承托。



4 Adjustable armrests
Simply adjust the arm height, width, and depth according to your body size and task.

可调节扶手
根据用户的体型和工作调整扶手高度、宽度及深度。



5 Replaceable seat cushion
A seat cushion that can be easily interchanged will reduce your maintenance costs, and keep your chair looking and feeling brand new.

可替换的椅座
可替换椅座能降低保养费用，使座椅时刻保持崭新状态。



6 Adjustable seat depth
Users of almost any height can easily navigate to their favored position with a seat depth adjustment option that accommodates different leg lengths.

座位深度调节
座位深度调节可满足不同腿长用户的需求，任何身高的用户都可找到最佳位置。



Relate™

One Chair. Countless Comforts. 一椅在手，尽享舒适

A selection of the world's most advanced seating technologies have been synthesized into a single chair that invites you to work effectively while feeling rested throughout the day. No matter how you like to operate in the office, Relate's array of ergonomic features allow you to personalize your comfort quickly and easy, ensuring your focus remains firmly on the task at hand.

Relate的设计融合全球顶尖座椅技术，让用户在全天高效工作且倍感舒适。Relate座椅的人体工程学设计可将个性化舒适快捷便利的带给用户，使用户专注工作。

Statement of Line 详细说明



Model 型号	Description 描述	H 高度 (mm)	D 深度 (mm)	W 宽度 (mm)	SH 座高 (mm)
RL-HR-10 / RL-HR-20	Black mesh or black leather headrest 黑网或黑皮头枕	220-290	180	300	-
RL-MHW20LCBKLKM01 / RLA-MHW20LA1PALCBKLKM01 RL-UHW20LCBK / RLA-UHW20LA1PALCBK	High back chair w/ adjustable armrests, 高背椅，带调节扶手	990-1120	610	660	440-570
RL-MHC20LCBKLKM01 / RLA-MHC20LA3PALCBKLKM01 RL-UHC20LCBK / RLA-UHC20LA3PALCBK	High back chair w/ fixed armrests, 高背椅，带固定扶手	990-1120	610	660	440-570
RL-UMW20LCBK	Mid back chair w/ adjustable armrests 中背椅，带调节扶手	940-1070	610	660	440-570
RL-UMC20LCBK	Mid back chair w/ fixed armrests 中背椅，带固定扶手	940-1070	610	660	440-570
RLM-MUG00CBKLKM01 / RLM-UUG00CBK RLM-PUG00CBK / RLM-MUCO3CBKLKM01 RLM-UUCO3CBK / RLM-PUCO3CBK	Four-legged side chair 四脚多功能座椅	850	550	620	470



1 AutoFit™ lumbar support
Cutting-edge air displacement technology allows Sum to automatically adjust with every move you make, determining where your back requires the most support and providing a customized fit for a productive workday.

自动腰部支撑
运用顶尖的空气置换技术，根据用户的移动进行自动调节，正确地判断出背部最需要支撑的部位，为用户提供个性化支撑，提高工作效率。



2 Tilt lock
If you prefer to work upright and alert, simply lock the chair in position for continuous support. Then release the lock to instantly recline and relax.

倾仰锁定
用户若倾向工作时保持端坐，只需将座椅锁定在该位置，就能提供持久支撑。倾仰时松开锁定开关即可。



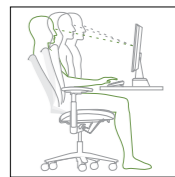
3 Adjustable armrests
The armrest can move up and down, in and out, or back and forth, inviting you to work for long periods of time without straining your arms and shoulders.

可调节扶手
扶手可上下、左右、前后移动，避免用户长时间工作造成肩臂疲劳。



4 Adjustable seat depth
Gently tug a small lever and the seat slides smoothly back and forth, ensuring all body shapes and heights can work in optimal comfort.

座位深度调节
轻拉小杆可使座位来回顺畅滑动，确保不同体型和身高的用户均可以最舒适的状态工作。



5 Avatar 2™ synchronized motion
Sum's adaptive ergonomic technology moves in harmony with your body, which reduces muscle fatigue. The seat level stays the same during recline, which means your line of sight and focus are maintained as you tilt back.

Avatar动态平衡倾仰-2
Sum的动态平衡倾仰技术跟随用户的身体移动以保持完美的平衡，减少肌肉疲劳。倾仰时通过升起椅座使椅座保持水平，使用户视线水平保持一致。



Sum™

A Perfect Fit. 完美契合

Sum offers you totally customized support with zero effort from you. By automatically adapting to your weight, size, and working position as you move, you don't need to guess the best position for your body – it just happens. Its sophisticated ergonomic features determine the unique characteristics of your shape and calculate balanced pressure distribution, resulting in lasting comfort throughout the day.

用户无需费力，Sum座椅便可提供完全个性化的支撑，根据用户的体重、体型和工作中的姿势自动瞬间调节。其先进的人体工程学特性可判断用户体型的特点并计算均衡压力分布，带来全天持久的舒适感。

Statement of Line 详细说明



Model 型号	Description 描述	H 高度 (mm)	D 深度 (mm)	W 宽度 (mm)	SH 座高 (mm)
SUM-HW20BLK	High back chair w/ adjustable armrests, black base 高背椅，带调节扶手，黑色五星爪	1020-1140	650	640	430-560
SUM-HWA20.A1PALBLK	High back chair w/ adjustable armrests, polished aluminum base 高背椅，带调节扶手，磨砂铝五星爪	1020-1140	650	640	430-560



1 VenTech backrest
The backrest's specially designed material regulates your temperature. Framed by a pliable carrier that pivots to move with its user, the backrest provides even, flexible support in almost every position.

VenTech椅背
椅背使用专用材料来控制人体温度。椅背有柔韧的外框架包围，随用户移动，可在任何位置下提供灵活支撑。



2 Tria seat technology
A breathable seat that distributes pressure evenly, minimizes stress on the body, and improves air circulation so you can enjoy sitting in comfort for extended periods.

Tria座椅技术
独特设计的可呼吸座垫，能均匀分散压力，将对人体压力减少到最小，促进空气循环，从而使用户可长时间舒适就座。



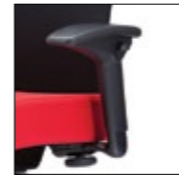
3 Plexus lumbar system
Accommodates multiple body shapes, increasing or reducing firmness and recline tension where it's needed.

Plexus腰部支撑系统
保护着用户的腰背部，并在需要时通过增减布面的紧度和拉力来适应各种体型。



4 Avatar balanced motion
A synchro-tilt function can perfectly balance recline angles without the needs of tension adjustment, and can support infinite tilt angles while allowing the user to maintain their sight level.

Avatar动态平衡倾仰
动态平衡倾仰自动地与用户的体重和动作相适应，无需压力调节，可带来各种倾仰角度，同时使用户视线保持一致位置。



1 Adjustable armrests
Adjust the armrests up and down or back and forth, modify their width, or pivot them at different angles.

可调节扶手
扶手可进行上下、前后、宽度调节，还可左右调节扶手方向角度。



2 Adjustable seat depth
The seat can easily slide back and forth, adapting to your body shape.

座位深度调节
座位可根据用户的体型灵活地前后滑动。



3 Synchronized tilting mechanism
Scout invites you to refine your own recline tension, augmenting your comfort at the simple pull of a lever.

同步倾仰机关
舒高帮助用户调节倾仰力度，轻轻一按即可瞬间提升舒适度。



4 5-position tilt lock
五段倾仰锁定



5 Adjustable back height
The comfortable upholstery backrest can be raised and lowered according to the user's height.

椅背高度调节
可根据用户身高上下调节椅背高度。

#19®

The Human Element of #19 #19座椅 缺你不可

#19 incorporates 18 intelligent seating functions designed to maximize comfort and flexibility, requiring only one more element to realize its full potential – you. Made from 100% recycled aluminum, 88% of #19's materials are recyclable, making it the chair of choice for the eco-friendly environment.

#19座椅汇集了18项智能功能，最大限度地提高舒适性和灵活性，距离充分发挥其潜力只差最后一个元素，那就是“你”。#19由100%的再生铝制成，88%的材料为可回收，是生态友好环境下座椅的第一选择。



Statement of Line 详细说明

Model 型号	Description 描述	H 高度 (mm)	D 深度 (mm)	W 宽度 (mm)	SH 座高 (mm)
A19-HWS2PR6BRS01	High back chair w/ adjustable armrests, silver frame 高背椅，带调节扶手，银色椅架	1020-1140	690	670	440-570
A19-HWB2P80BRS01	High back chair w/ adjustable armrests, charblack metallic frame 高背椅，带调节扶手，碳灰金属色椅架	1020-1140	690	670	440-570

Scout™ 舒高

Practically Simple. 简约而实用

Scout merges simplicity with high-performing functionality in a contemporary chair that exceeds its price tag on comfort, durability, and flexibility. Whether you work in an energetic open-plan space, a private office, or a collaborative conference room, Scout is always in the right place.

舒高座椅富有时尚感，简约中融入高性能，在舒适性、耐用性和灵活性上物超所值。无论是在充满活力的开放空间，还是私人的办公室，或是会议室，舒高座椅都有用武之地。



Statement of Line 详细说明

Model 型号	Description 描述	H 高度 (mm)	D 深度 (mm)	W 宽度 (mm)	SH 座高 (mm)
SCU-MW.F.2.0.P71	Mesh back chair w/ adjustable armrests 网背椅，带调节扶手	990-1075	680	650-710	465-550
SCU-ML.F.2.0.P71	Mesh back chair w/ loop arms 网背椅，带环形固定扶手	990-1075	680	650	465-550
SCU-MA.F.2.0.P71	Mesh back chair, armless 网背椅，不带扶手	990-1075	680	650	465-550
SCU-UW.A.2.0.P71	Upholstered back chair w/ adjustable armrests 饰面背椅，带调节扶手	990-1145	680	650-710	465-550
SCU-UL.A.2.0.P71	Upholstered back chair w/ loop arms 饰面背椅，带环形固定扶手	990-1145	680	650	465-550
SCU-UA.A.2.0.P71	Upholstered back chair, armless 饰面背椅，不带扶手	990-1145	680	650	465-550