



# Ingage

Connected Office

VENEER



# Ingage

More than private space, Ingage is a productive and connected space that provides choice for you and your team with a set of new essential elements designed for multiple activities.

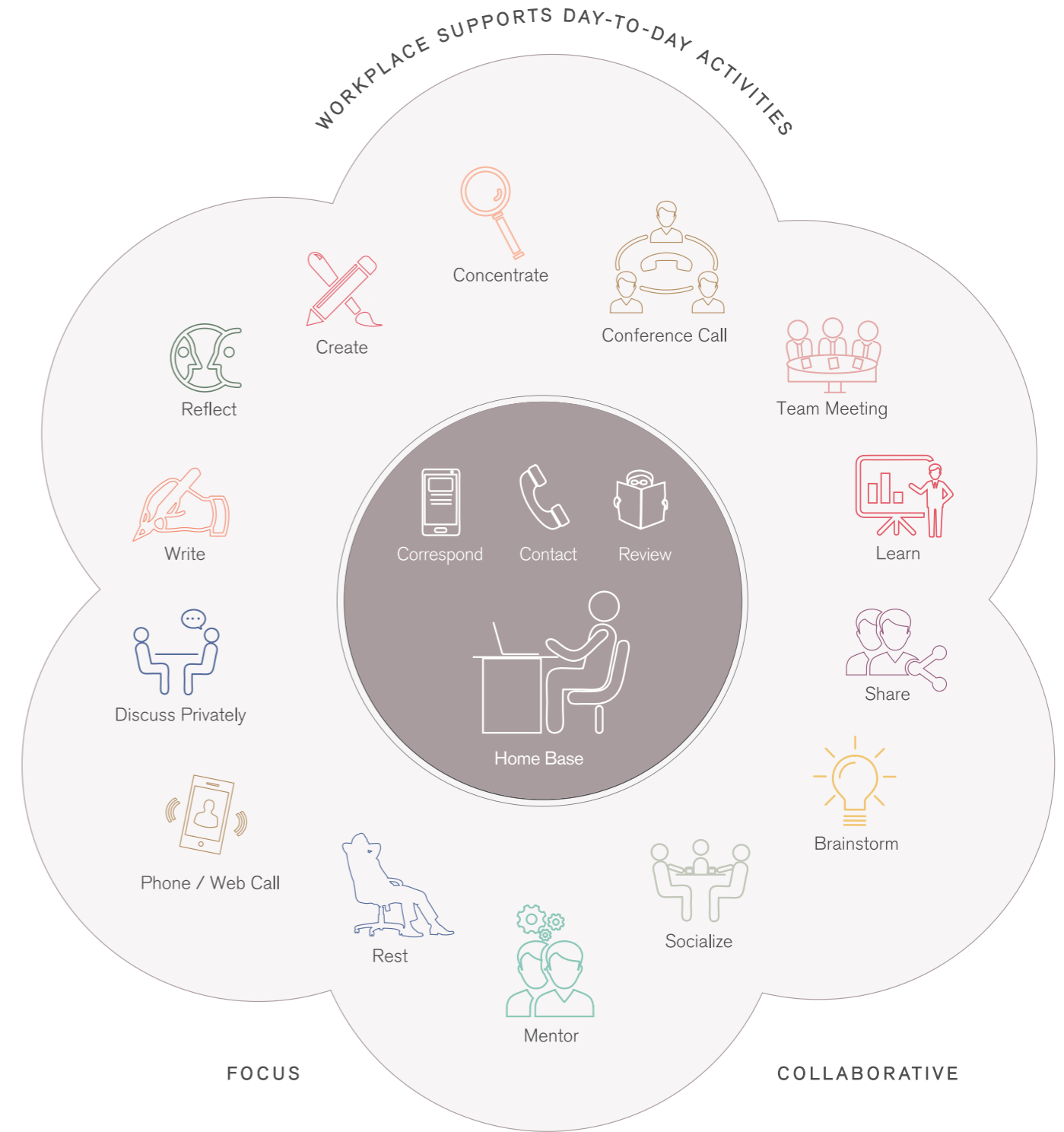
## Evolve into an activity-based workplace

Offices are becoming denser and private rooms are getting smaller while requiring more functionality. At the same time, business success requires more teamwork and closer collaboration, driven by flatter management hierarchies and modern styles of leadership. As a result, organizations must manage their teams within a community and increase interaction through varied activity-based work settings. Ingage is a connected space platform that optimizes your office to support multiple activities, intuitively and efficiently.

**CHOOSE YOUR SPACE BASED ON YOUR ACTIVITY >>**

INGAGE MAXIMIZES SPACES WITH FLEXIBLE SETTINGS WHERE INDIVIDUALS AND TEAMS CAN CHOOSE THE BEST SPACE FOR EACH ACTIVITY. INDIVIDUALS AND TEAMS ARE MORE PRODUCTIVE WHEN THEY WORK IN A SETTING THAT IS APPROPRIATE FOR THE ACTIVITY. THEY ARE PERFORMING RATHER THAN SPENDING THE ENTIRE DAY SITTING AT ONE DESK. SOME ACTIVITIES REQUIRE DEEP FOCUS WHILE OTHERS NEED VARYING DEGREES OF COLLABORATION.

INGAGE CONCEPT CONSIDERS THE DESK AS A "HOME BASE" AND THEN PROVIDES A RANGE OF OTHER SETTINGS TO SUIT VARIED ACTIVITIES.



## Solutions for a productive and connected workplace

Ingage is a productive and connected space that lets you and your team choose from a set of new essential elements designed for multiple activities. The right work setting facilitates more efficient and effective work. When your teams have the space they need, they are more engaged, more productive and add more value to your business.

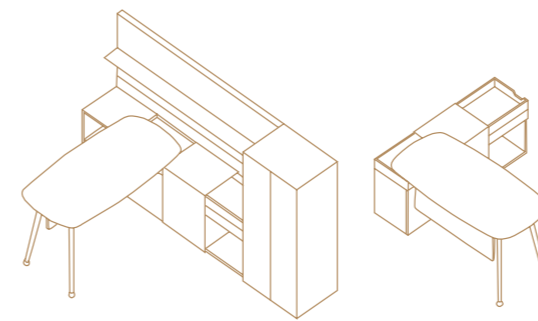
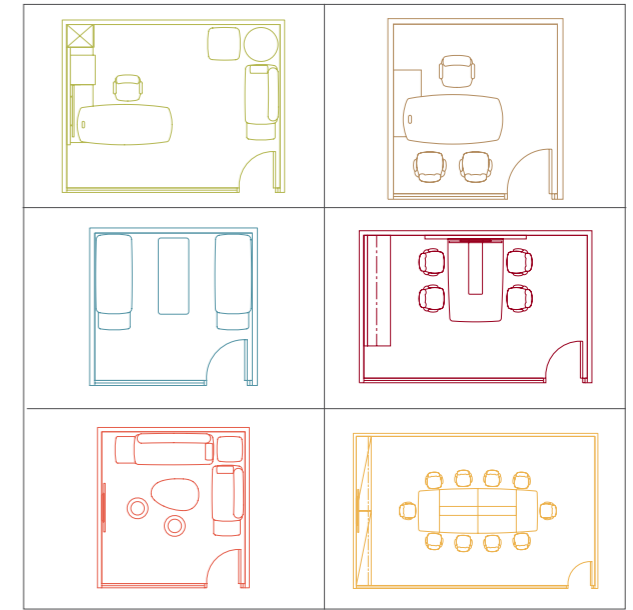


### Balance

A balanced workplace is a comfortable yet inspiring space, free from distractions. A set of elements creates a private space platform that guides you intuitively from one activity to the next.

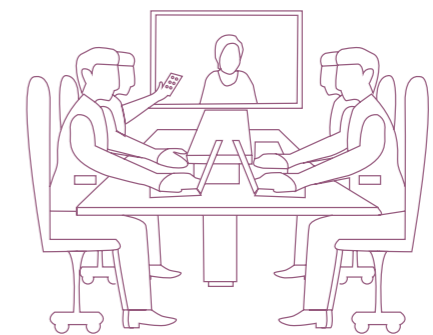
### Choice

A selection of six core settings is designed to suit each of your work modes during the day. Customize your private space with an invigorating mix of color and materials to suit your personal style.



### Change

A flexible kit-of-parts logic anticipates both planned and unexpected changes in your business. Clever design shifts the focus from cost efficiency to value creation in private workplace design and planning.



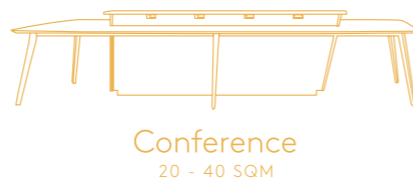
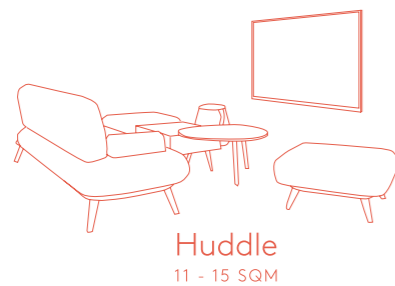
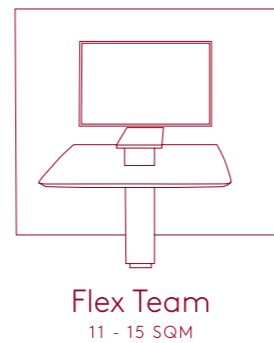
### Connection

Promote leading, sharing and learning with connected remote meeting spaces that optimize collaboration and interaction with easy-to-access technology. The space and tools to connect in the right ways inspire innovation and creativity.

## Ingage: boundless opportunities for every workspace

Beyond dedicated offices, Ingage offers a more efficient allocation of private spaces and provides staff with a choice of work settings designed to accommodate a variety of tasks and collaborative activities. Choose from six settings including Executive, Office, Focus, Flex Team, Huddle and Conference.

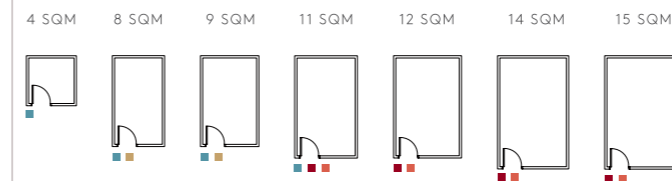
VERSATILE 6 WORK SETTINGS FIT INTO DIFFERENT SIZES OF THE ROOM TYPOLOGIES. THIS ACCOUNTS FOR THE MAJORITY OF CLIENTS DEMANDS NOWADAYS.



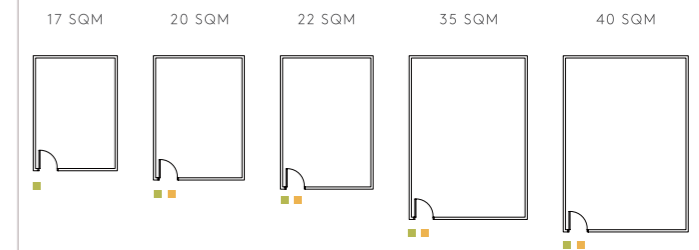
## Room typologies: creating value with a choice of work settings

Our versatile work settings are designed to fit a wide range of room types and sizes to suit all your office planning needs.

### Entry/Mid-level Managers



### Senior Level Managers and Executives



- EXECUTIVE
- FOCUS
- OFFICE
- FLEX TEAM
- HUDDLE
- CONFERENCE

# Executive

Effective workspace with generous storage and convenient technology integration supports a wide variety of work modes, from focus and mentoring to impromptu meetings and small group interactions. The Executive setting is designed to balance concentration with collaboration and promote communication between leaders and their teams.





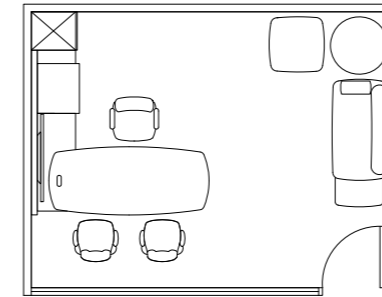
# Executive: balance in leadership

Shift between focus and collaborative work modes with ease and efficiency.



Room Size  
17 - 40 SQM

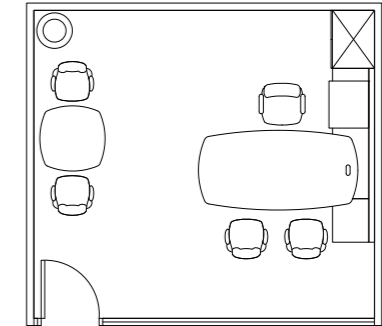
3600 x 4700 (17 SQM)



COMBINED CABINET W/WALL UNIT:  
MAIN DESK W/SMART CABINET  
W/SLIDING SURFACE  
WORK WALL UNIT  
W/TV MOUNT  
SINGLE 2-DOOR WARDROBE

OPEN SHELF STORAGE  
2-SEATER SOFA  
ROUND TABLE  
OTTOMAN  
CHAIR

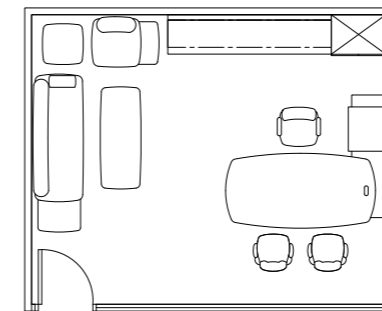
4700 x 4200 (20 SQM)



COMBINED CABINET W/WALL UNIT:  
MAIN DESK W/SMART CABINET  
W/SLIDING SURFACE  
WORK WALL UNIT  
W/METAL SHELVING  
HANGING CABINET  
OPEN SHELF STORAGE  
4-DOOR CABINET

MEETING TABLE  
STOOL  
CHAIR

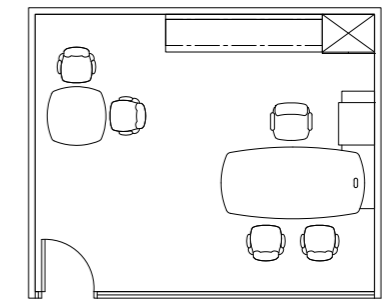
5200 x 4200 (22 SQM)



MAIN DESK W/SMART CABINET  
W/SLIDING SURFACE  
COMBINED CABINET W/WALL UNIT:  
WORK WALL UNIT  
W/METAL SHELVING  
HANGING CABINET  
LOWER CABINET W/2 SWING  
DOOR W/PLATE  
4-DOOR CABINET

1-SEATER SOFA  
3-SEATER SOFA  
RECTANGLE TABLE  
SQUARE TABLE  
CHAIR

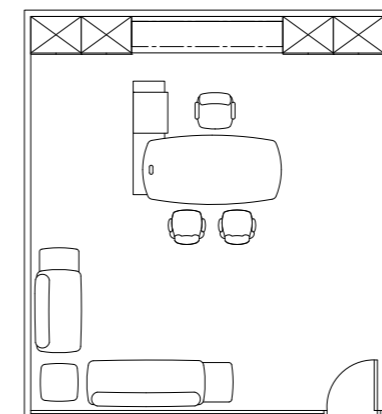
5200 x 4200 (22 SQM)



MAIN DESK W/SMART CABINET  
W/SLIDING SURFACE  
COMBINED CABINET W/WALL UNIT:  
WORK WALL UNIT  
W/METAL SHELVING  
HANGING CABINET  
LOWER CABINET W/2 SWING  
DOOR W/PLATE  
4-DOOR CABINET

MEETING TABLE  
CHAIR

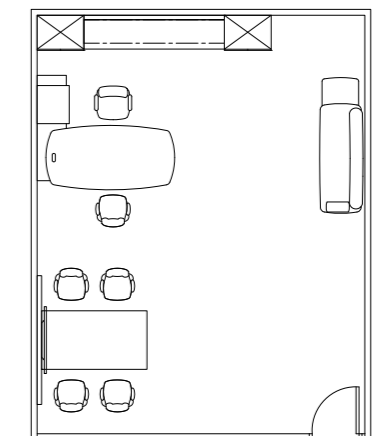
5600 x 6200 (35 SQM)



MAIN DESK W/SMART CABINET  
W/SLIDING SURFACE  
COMBINED CABINET W/WALL UNIT:  
WORK WALL UNIT  
W/METAL SHELVING  
HANGING CABINET  
LOWER CABINET W/2 SWING  
DOOR W/PLATE  
4-DOOR CABINET

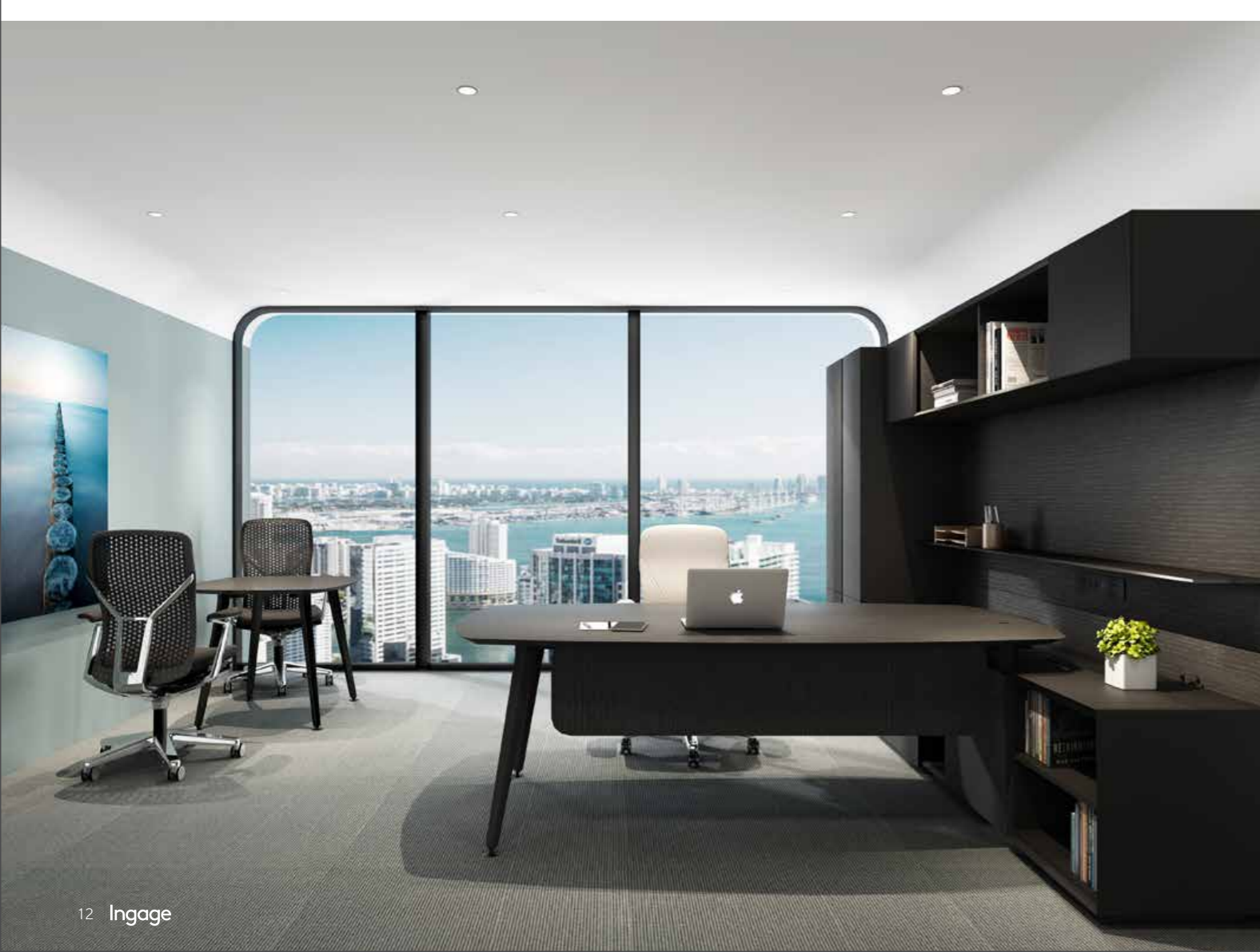
2-SEATER SOFA  
3-SEATER SOFA  
SQUARE TABLE  
CHAIR

5600 x 7100 (40 SQM)



MAIN DESK W/SMART CABINET  
W/SLIDING SURFACE  
COMBINED CABINET W/WALL UNIT:  
WORK WALL UNIT  
W/METAL SHELVING  
HANGING CABINET  
LOWER CABINET W/ SWING  
DOOR W/PLATE  
4-DOOR CABINET

MEDIA CENTER  
3-SEATER SOFA  
CHAIR



TOP LEFT: ROOM SIZE: 17SQM COLOR PALETTE SELECTION: DUSK  
BOTTOM LEFT: ROOM SIZE: 20SQM COLOR PALETTE SELECTION: MIDDAY

# Office

Smart enclosed working and collaboration space supports focus work, impromptu and small group meetings or one-on-one private conversations. The office provides managers and supervisors with an effective space for mentoring and team collaboration to promote a culture of continuous learning.





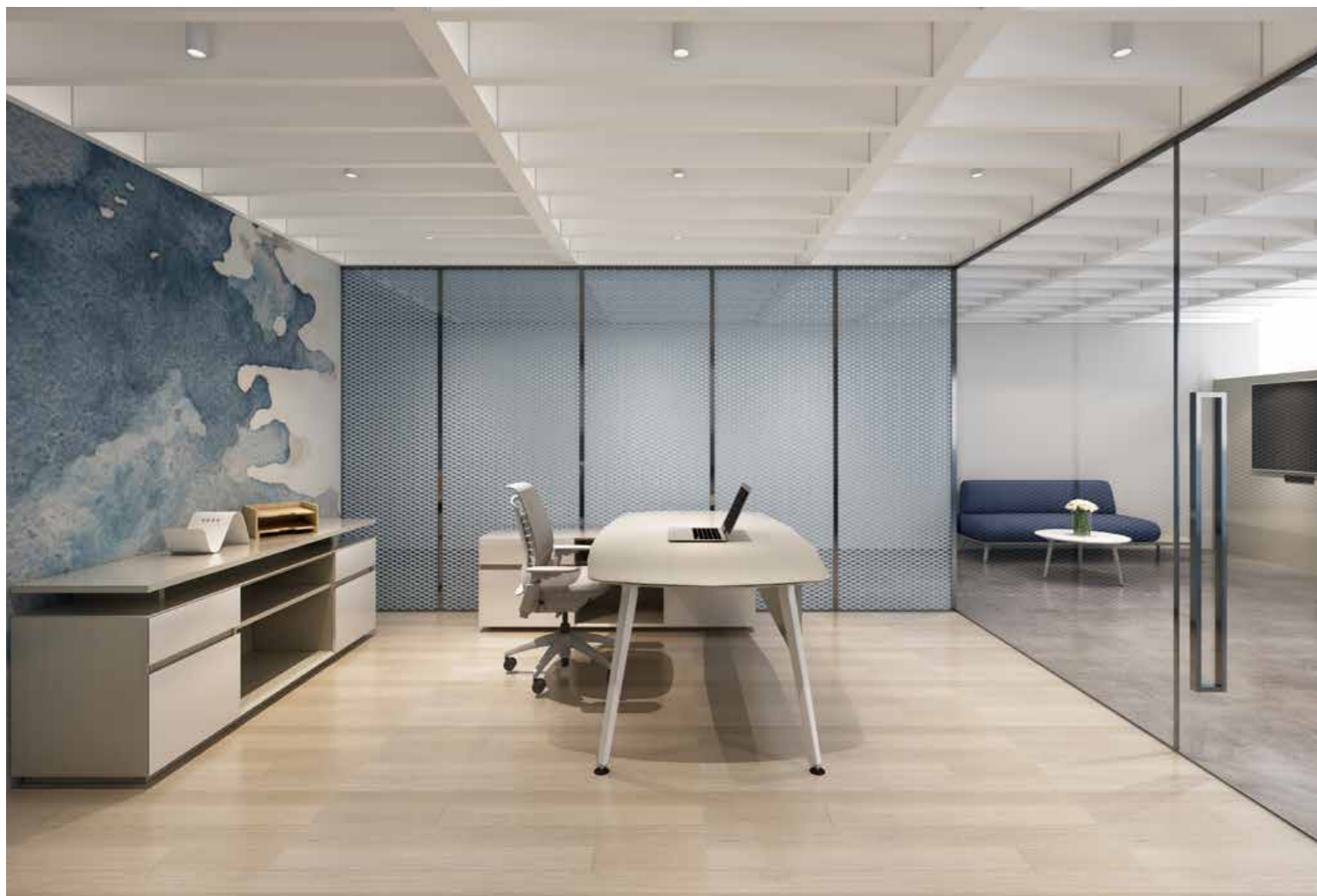


# Office: focus and teamwork

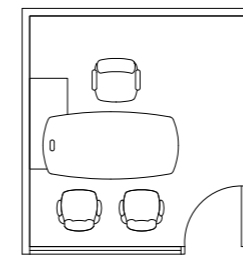
Provide a private space for focused and creative work or small group conversations.



Room Size  
8 - 11 SQM

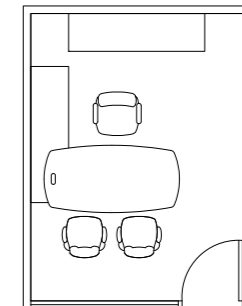


2700 x 3000 (8 SQM)



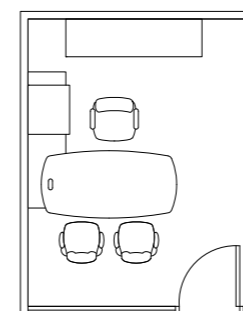
MAIN DESK W/SIDE CABINET  
CHAIR

2900 x 3800 (11 SQM)



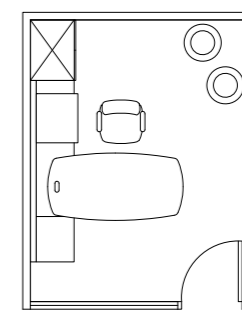
MAIN DESK W/ EXTENDED CABINET  
LOWER CABINET W/2 SETS OF DRAWERS  
W/PLATE  
CHAIR

2900 x 3700 (11 SQM)



MAIN DESK W/SMART CABINET  
W/SLIDING SURFACE  
LOWER CABINET W/2 SWING  
DOOR W/PLATE  
CHAIR

2900 x 3700 (11 SQM)

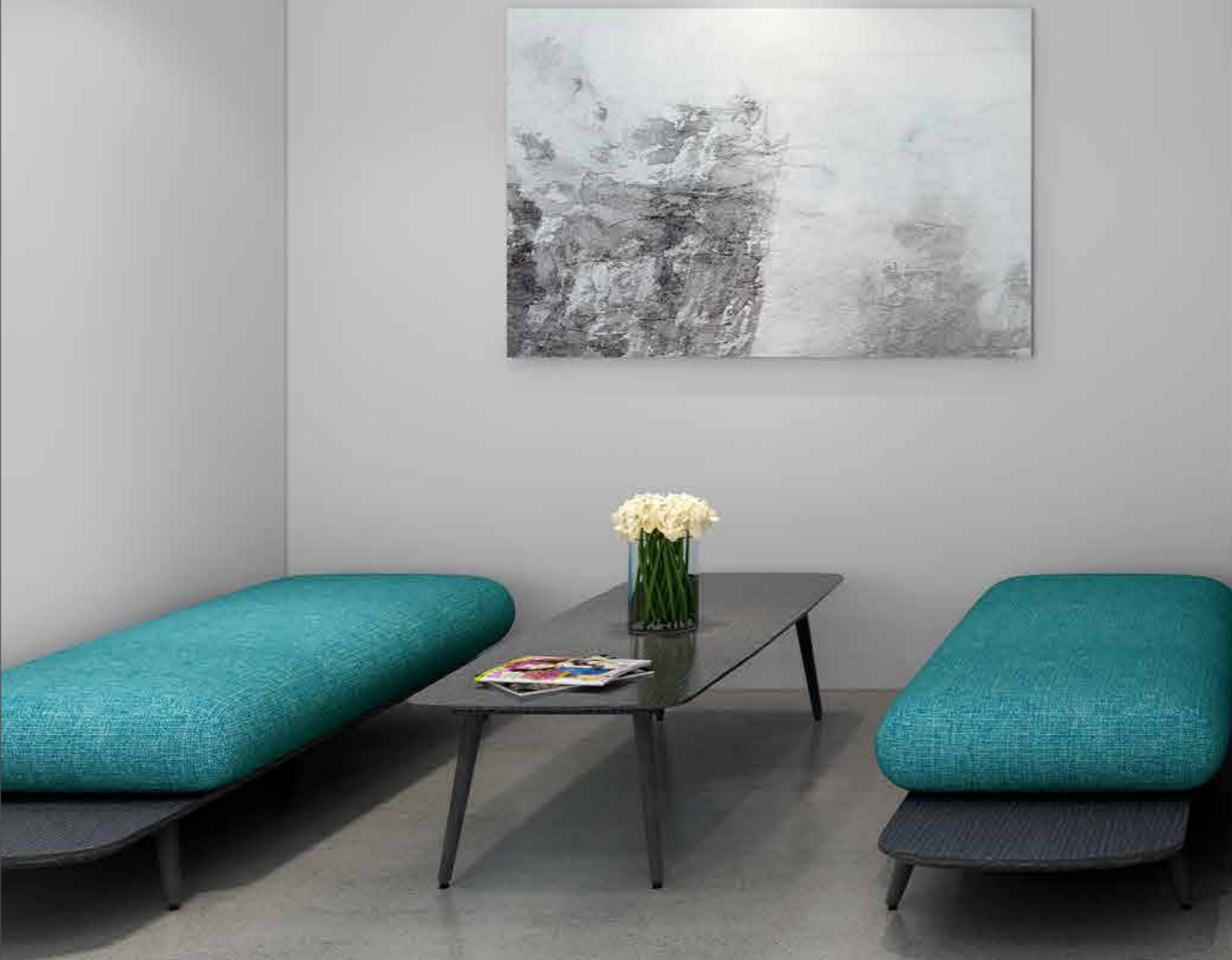


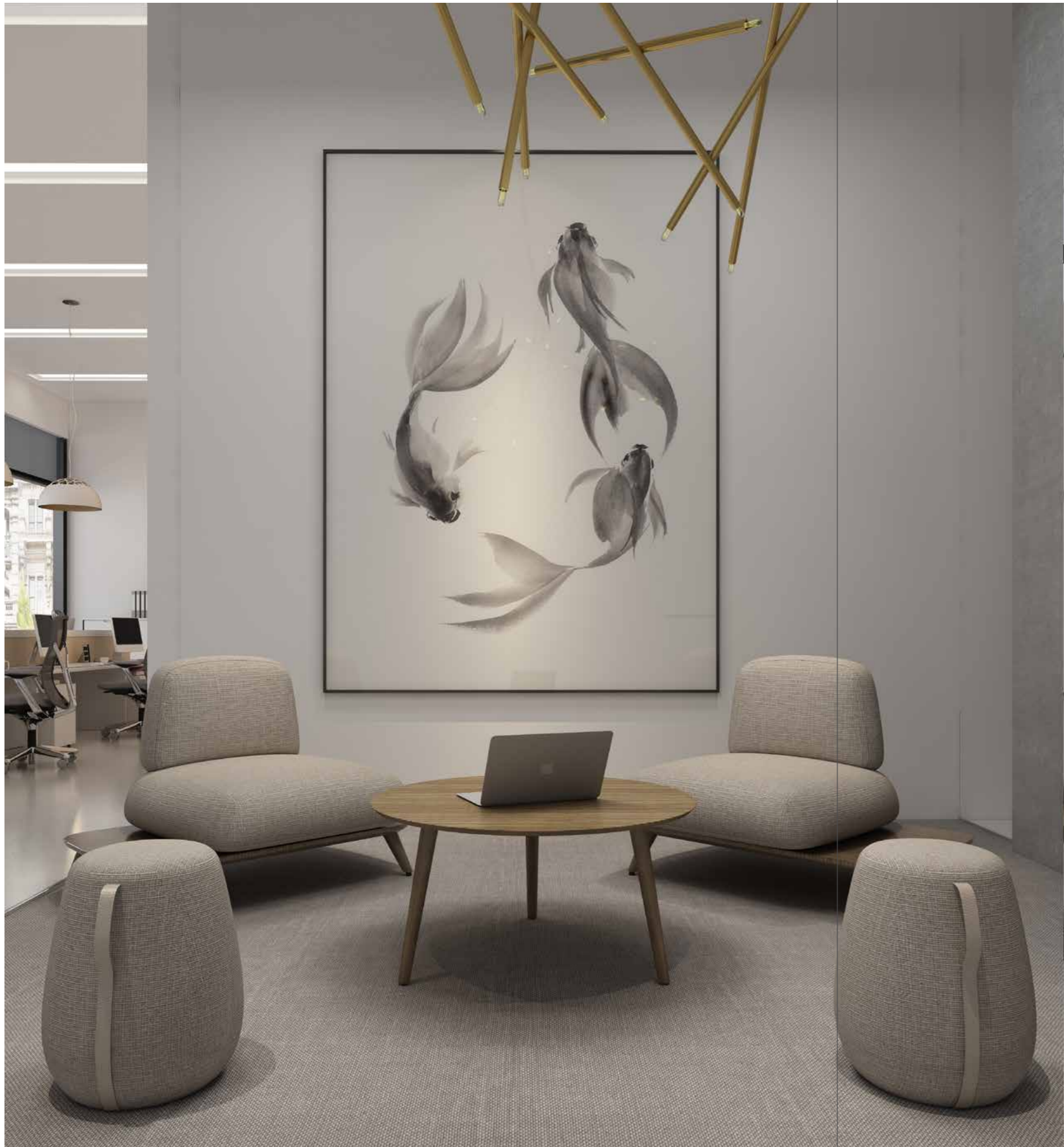
COMBINED CABINET W/WALL UNIT:  
MAIN DESK W/SMART CABINET  
W/SLIDING SURFACE  
WORK WALL UNIT W/METAL SHELVING  
OPEN SHELF STORAGE  
2 DOORS WARDROBE  
STOOL  
CHAIR

TOP LEFT & BOTTOM LEFT: ROOM SIZE: 11SQM COLOR PALETTE SELECTION: DAWN

# Focus

Flexible, efficient space designed to accommodate individual work, impromptu meetings, informal gatherings for a few people or a quick conference call.





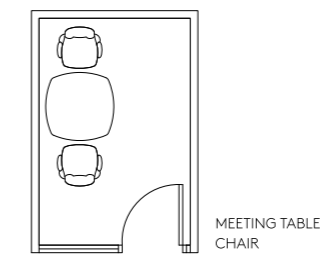
## Focus: flexibility on-the-go

Ideal for impromptu meetings or a quick conference call.

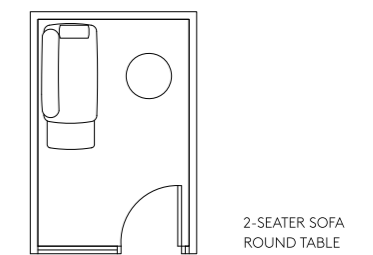


Room Size  
6 - 9 SQM

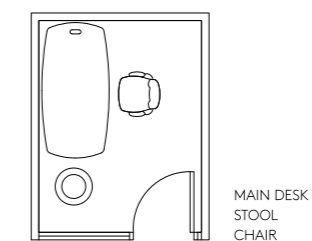
2000 x 3000 (6 SQM)



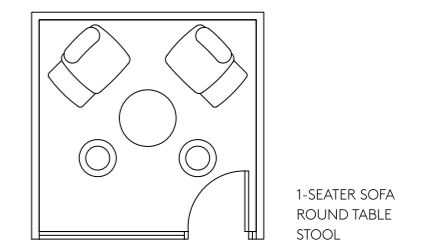
2000 x 3000 (6 SQM)



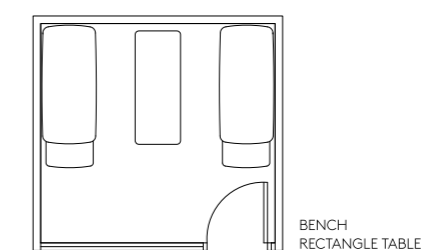
2100 x 2800 (6 SQM)



2800 x 2800 (8 SQM)



3100 x 2900 (9 SQM)



LEFT: ROOM SIZE: 8SQM COLOR PALETTE SELECTION: TWILIGHT, MIDDAY - SU39

Efficient space is especially designed for teams to touch base and promote continuous learning, open discussions, team collaboration, brainstorming, presentations and the exchange of digital information. A high degree of technology integration and plug-and-play functions facilitate multi-tasking and interactions around media and technology.

# Flex Team





## Flex Team: facilitate remote collaboration

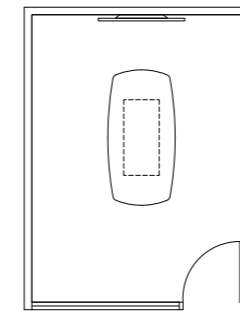
A multi-media setting to collaborate, brainstorm and share information.



Room Size  
11 - 15 SQM

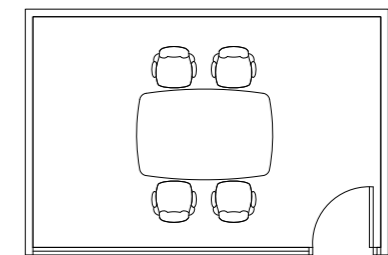


2900 x 3800 (11 SQM)



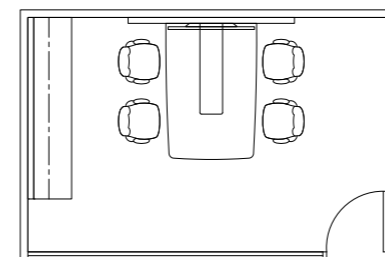
HEIGHT ADJUSTMENT TABLE (HAT)

4600 x 3000 (14 SQM)



DOUBLE-LAYER TEAM TABLE  
CHAIR

4800 x 3100 (15 SQM)



MEDIA CENTER  
COMBINED CABINET WITH WALL UNIT:  
WORK WALL UNIT W/METAL SHELVING  
LOWER CABINET W/2 SETS OF DRAWERS  
W/PLATE  
CHAIR

TOP LEFT: ROOM SIZE: 11SQM COLOR PALETTE SELECTION: DUSK  
BOTTOM LEFT: ROOM SIZE: 14SQM COLOR PALETTE SELECTION: MORNING

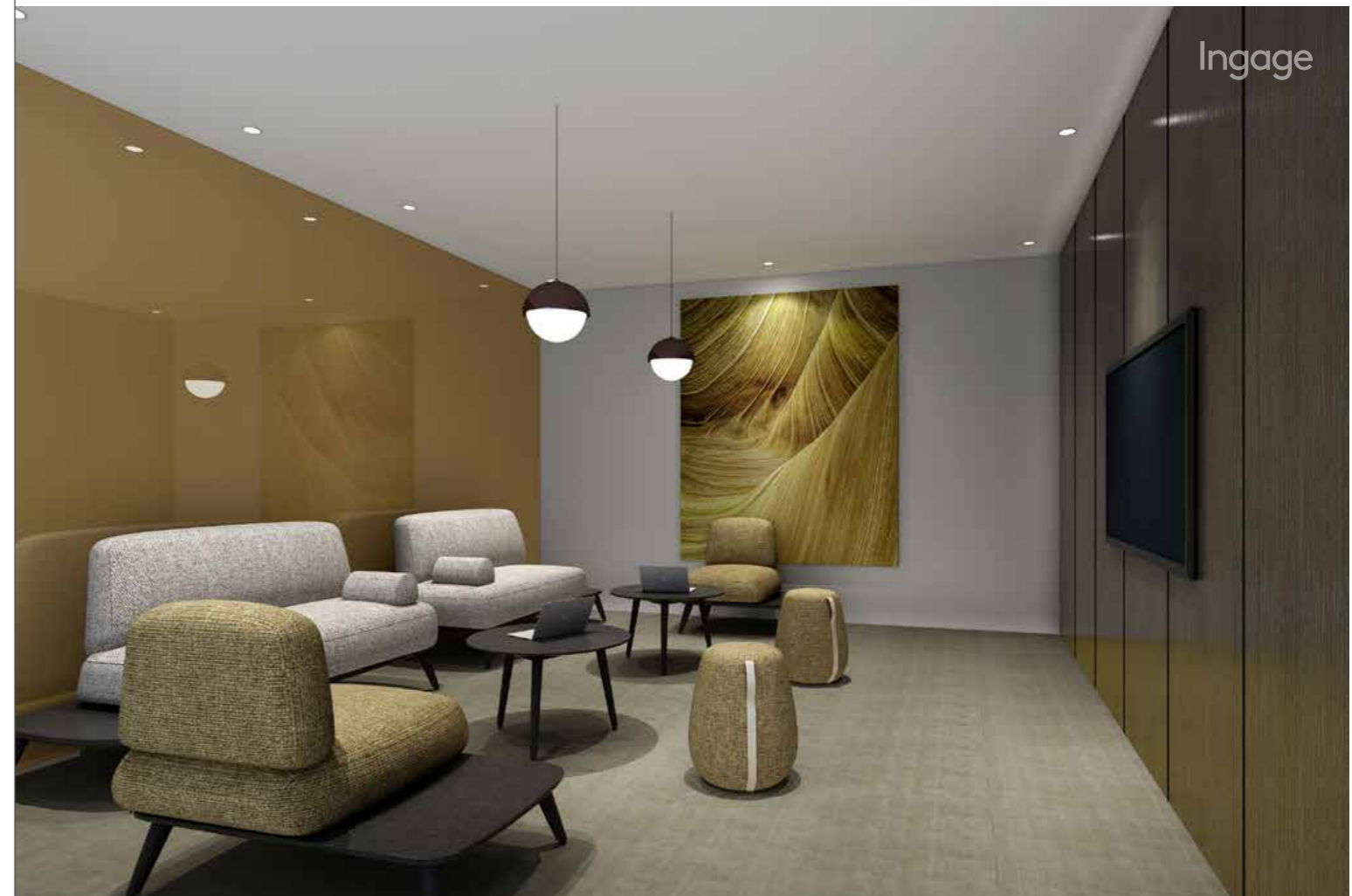
# Huddle

Private meeting space designed for hosting small group collaborations, brainstorming sessions or social gatherings. A huddle space can be equipped with teleconferencing or presentation facilities for efficient remote meeting, or simply used as a comfortable seating area and extension of your lifestyle at the workplace.



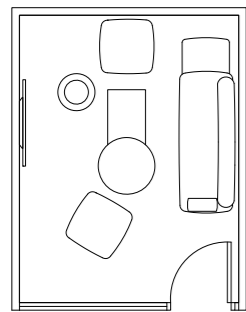
# Huddle: meet in comfort

Enable brainstorming, group meetings or social gatherings.



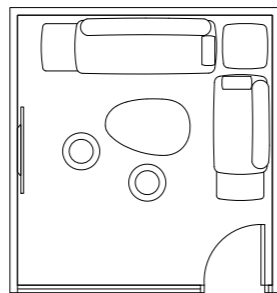
Room Size  
11 - 15 SQM

2900 x 3800 (11 SQM)



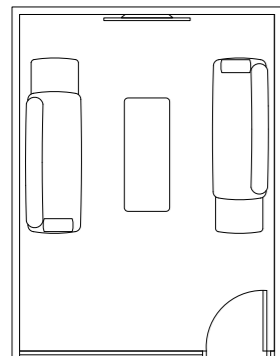
3-SEATER SOFA  
BOX TABLE  
ROUND TABLE  
OTTOMAN  
STOOL

3400 x 3500 (12 SQM)



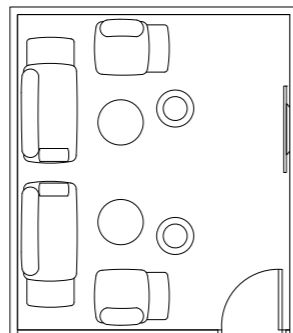
2-SEATER SOFA  
3-SEATER SOFA  
SQUARE TABLE  
EGG (ORGANIC) TABLE  
STOOL

3400 x 4400 (15 SQM)



3-SEATER SOFA  
RECTANGLE TABLE

3600 x 4100 (15 SQM)



1-SEATER SOFA  
2-SEATER SOFA  
ROUND TABLES  
STOOL



TOP RIGHT: ROOM SIZE: 15SQM COLOR PALETTE SELECTION: MIDDAY  
BOTTOM RIGHT: ROOM SIZE: 15SQM COLOR PALETTE SELECTION: TWILIGHT

# Conference

Effective larger meeting space ideal for hosting high-end video conferences, larger group meetings, knowledge sharing sessions, presentations or the exchange of digital information. A smart cable management solution and plug-and-play functions support multi-tasking and team collaboration within larger groups.

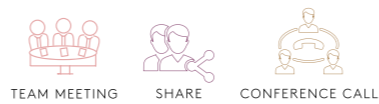






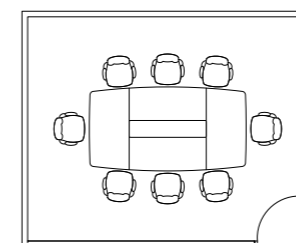
## Conference: Enable teamwork near and far

A larger conference space that supports BYOD and high-end technology conferencing.



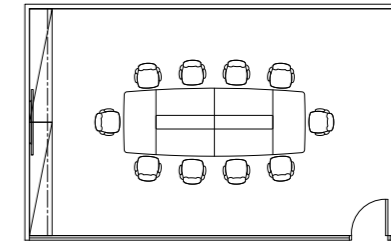
Room Size  
20 - 40 SQM

4000 x 5000 (20 SQM)



CONFERENCE TABLE  
CHAIR

8000 x 5000 (40 SQM)



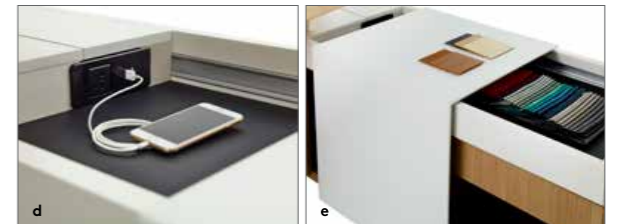
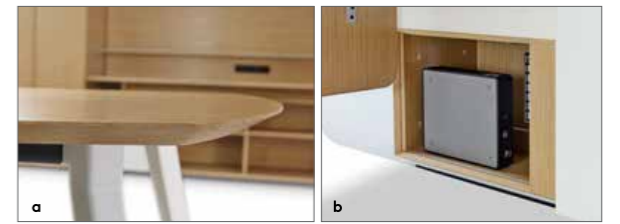
CONFERENCE TABLE  
LOWER CABINET W/2 SETS OF DRAWERS W/PLATE  
CHAIR

# Product feature: designed for productivity

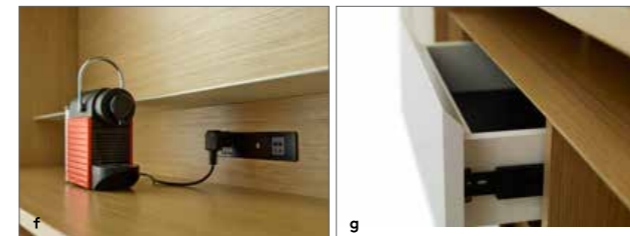
## Executive Desk and Cabinet Combination Set



**Multi-tasking workspace** | Boost productivity with an effective multi-tasking work area that includes a smart cabinet with a sliding cover that doubles as additional desk space. Convenient power and USB sockets combined with a BYOD platform improves mobility and offers round-the-clock connectivity. An innovative Ingage storage system, including a three-door wardrobe, keeps everything within easy reach.



**EXECUTIVE DESK WITH SMART CABINET**  
**a** SLOPE EDGE WITH SOFT ROUND CORNER **b** CPU STORAGE HIDDEN UNDER DESK **c** SIDE STORAGE **d** USB POWER SUPPORTS BYOD **e** SLIDING SURFACE



**CABINET SET**  
**f** CONVENIENT POWER AND USB SOCKET SUPPORTS BYOD **g** FUNCTIONAL DRAWER WITH 45 DEGREE KNIFE EDGE DESIGN **h** SWING DOOR CABINET WITH HANGING RAIL **i** METAL SHELIVING FOR DISPLAY ITEMS



**OFFICE DESK WITH EXTENDED CABINET**  
**j** USB SOCKET SUPPORTS BYOD **k** STATIONERY HOLDER

# Product feature: designed for collaboration

## Conference Table



**Modular and extendible table** | Accommodate large meetings with a modular table that grows up to 9.8m. A multiple socket tower provides easy access to power while sliding doors and hidden storage keep the surface tidy.



**a** CONVENIENT POWER AND USB SOCKET SUPPORTS BYOD **b** SLIDING DOOR OPENING FOR THE EASE OF CABLE MANAGEMENT **c** MODULAR DESIGN TOWER BASE ALLOWS ITS' 600MM SEGMENTS TO EXTEND THE TABLE UP TO 9.8M

## Multi-media Centre

**Connected team** | Facilitate seamless communication, knowledge sharing and collaboration during remote team meetings with an interactive workspace including an advanced TV conference function, convenient power and USB sockets.



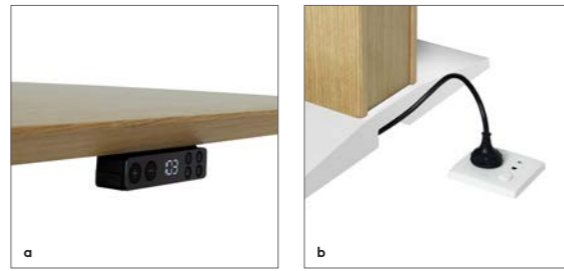
**a** CONVENIENT POWER AND USB SOCKET SUPPORTS BYOD **b** SLIDING DOOR OPENING FOR TIDY CABLE MANAGEMENT



## Product feature: designed for comfort

### Height Adjustable Table (HAT)

**Sit-to-stand** | Support alternative postures and individual working styles with a HAT intelligent control, including a memory function holding three positions, which adjusts the table height from 640mm to 1,300mm in just nine seconds.



**a** INTELLIGENT MEMORY CONTROL  
**b** TABLE BASE DESIGN FOR HIDDEN CABLE MANAGEMENT TO REDUCE CLUTTER

### Double-layer Table

**Efficient team meeting** | Keep your work surfaces neat with a double-layer team table offering a convenient lower sill to rest devices. Built-in power sockets and USB ports on all sides support BYOD to enable efficient team meetings.



**a** LOWER LAYER OF TABLE SHELF TO HOLD PERSONAL DEVICE  
**b** CONVENIENT POWER AND USB SOCKET TO SUPPORT BYOD

### Sofa & Occasional Table



**At home and at the office** | Ensure a pleasurable seating experience combining a contemporary design with the ultimate in comfort. Gently sloping, rounded edges and corners provide the flexible move and right support for every position.



**Balance and comfort** | Reinforce balance and comfort with a range of occasional tables featuring fluid and organic shapes, finished with a sleek surface and sloped edges. Group different table shapes and heights to meet the needs of varying group settings in your workplace.



**a** SOFA BUILT-IN SIDE TABLE **b** GENTLY SLOPED EDGE SOLID WOOD AND VENEER EVOKES NATURE IN THE WORKSPACE **c** ACCENT WOOD PLATFORM BASE AND LEG **d** MOVABLE ARMREST PILLOW EASILY REPOSITIONED.  
**e** REVERSIBLE SOFA DESIGN CAN BE RECONFIGURED EASILY **f** ELEGANTLY CRAFTED LEATHER HANDLE ALLOWS LIGHTWEIGHT STOOL TO BE EASILY LIFTED **g** CURVE ORGANIC LINES CREATE A HARMONIOUS MEETING PLACE

# Ingage design concept: an exquisite new aesthetic

Ingage inspires harmony in the workplace by infusing Western Contemporary design style with Chinese Cultural influences to create a perfect balance of lines, linear planes and organic shapes. Curved lines, sloped edges and sleek surfaces give way to a simple and contemporary design that is a blend of both worlds. Ingage elegantly blends functionality and aesthetics to create uncluttered workspaces designed to maximise both comfort and productivity.



NATURAL GEOMETRIC AND ORGANIC FORMS



GENTLY SLOPED ROUND EDGES

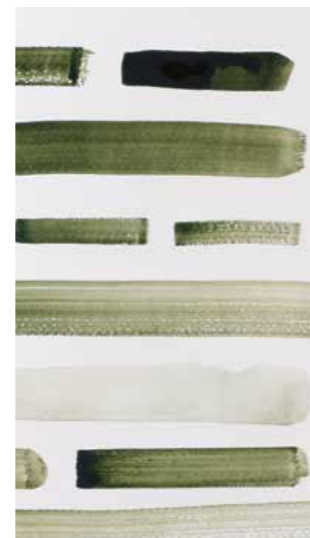


MATERIAL AND COLOR MIX AND MATCH



HARMONIOUS INTERSECTION OF MATERIALS : LEATHER AND SOLID WOOD

PLANES, LINES AND CURVES



In Chinese culture, hand drawn paintings and landscapes are considered the highest form of art and expression.



NATURAL MATERIALS AND COLOR SELECTION

Blending Chinese culture into a westernized contemporary style and function together with harmony and balance



BLEND OF WOOD AND METAL ACCENTS



CONTRAST AND PERFECT BALANCE OF LINES AND LINEAR PLANES



# Color & material: refresh your workplace

Ingage presents five color palettes, refreshing your workplace by offering a harmonious blend of materials, textures and fabrics. The earthy colors of Dawn and Morning, the regal reds of Dusk, and the crisp blue and grey shades of Mid-day and Twilight – each combination helps reinforce your corporate culture throughout the office. Choose a pre-selected palette or hand pick your own selection to create a comfortable workplace in any environment.

## Dawn

SU15 SU02 MD25 MD04 LE50 LE11

White MFC/Metal Leg

Shallow Grain White Oak WO-TLMCP/OP



## Morning

SU82 SU27 MD26 MD24 LE51 LE12

White MFC/Metal Leg

Light Wheat Elmwood EL-TLMCP/OP



## Midday

SU39 SU24 MD18 MD02 LE52 LE14

Black MFC/Metal Leg

Black Apricot Wood BA-TLMCP/OP



## Dusk

SU43 SU29 MD03 MD22 LE13 LE53

Black MFC/Metal Leg

Natural Teakwood TK-TLMCP/OP

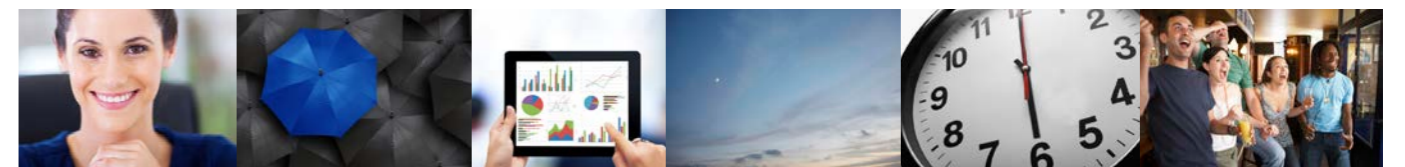


## Twilight

SU21 SU35 MD14 MD23 LE15 LE54

Black MFC/Metal Leg

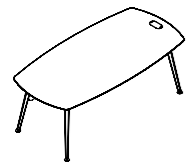
Coffee Walnut CW-TLMCP/OP



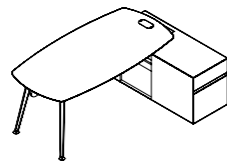
Remark: Color variations may occur on printed matters. Please refer to swatch cards or actual product sample.

# Statement of Line

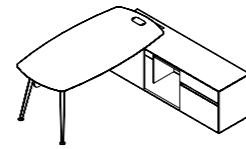
## MAIN DESK W/SIDE CABINET



MAIN DESK  
W1800 D900 H748  
W2200 D1100 H748

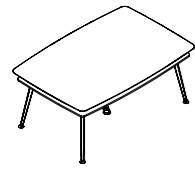


MAIN DESK W/SIDE CABINET  
OVERALL SIZE  
W2000 D1340 H748  
W2380 D1350 H748  
MAIN DESK  
W1800 D900 H748  
W2200 D1100 H748  
SIDE CABINET  
W1200 D500 H630

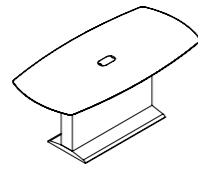


MAIN DESK W/EXTENDED CABINET  
OVERALL SIZE  
W2000 D1940 H748  
W2380 D1950 H748  
MAIN DESK  
W1800 D900 H748  
W2200 D1100 H748  
EXTENDED CABINET  
W1800 D500 H630

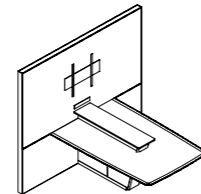
## TEAM TABLE



DOUBLE-LAYER TEAM TABLE  
W1800 D1200 H748

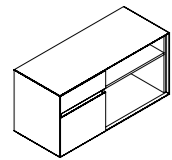


HEIGHT ADJUSTMENT TABLE (HAT)  
W1800 D900 H748 (H1200)

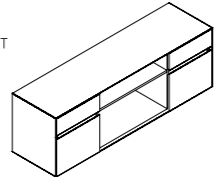


MEDIA CENTER  
OVERALL SIZE  
W2200 D1880 H2000 (H891)  
WALL UNIT  
W2200 D80 H2000  
CONFERENCE TABLE  
W1200 D1800 H748 (H891)

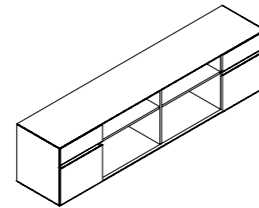
## LOWER CABINET



LOWER CABINET W/SINGLE SET SET OF DRAWER  
W1200 D500 H630

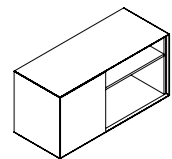


LOWER CABINET W/2 SETS OF DRAWERS  
W1800 D500 H630

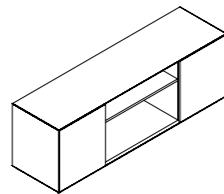


LOWER CABINET W/2 SETS OF DRAWERS  
W2400 D500 H630

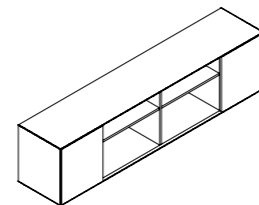
## LOWER CABINET



LOWER CABINET W/SINGLE SWING DOOR  
W1200 D500 H630

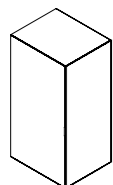


LOWER CABINET W/2 SWING DOORS  
W1800 D500 H630



LOWER CABINET W/2 SWING DOORS  
W2400 D500 H630

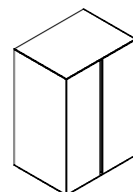
## WARDROBE / HIGH CABINET



SINGLE DOOR WARDROBE  
W500 D600 H1200

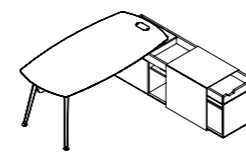


SINGLE 2-DOOR WARDROBE  
W500 D600 H2000



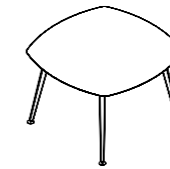
2-DOOR WARDROBE  
W800 D600 H1200

## MAIN DESK W/SIDE CABINET



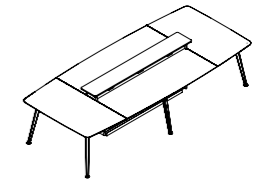
MAIN DESK W/SMART CABINET W/SLIDING SURFACE  
OVERALL SIZE  
W2000 D1940 H748  
W2380 D2380 H748  
MAIN DESK  
W1800 D900 H748  
W2200 D1100 H748  
SMART CABINET W/SLIDING SURFACE  
W1800 D500 H630  
W2200 D500 H630

## MEETING TABLE



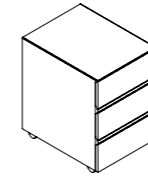
MEETING TABLE  
W900 D900 H748  
W1200 D1200 H748

## CONFERENCE TABLE

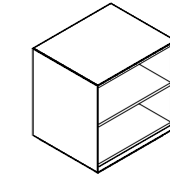


CONFERENCE TABLE  
W2800 D1500 H748 (H891)  
W3400 D1500 H748 (H891)  
W4000 D1500 H748 (H891)

## PEDESTAL

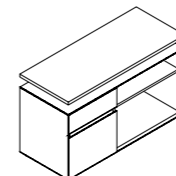


PEDESTAL  
W426 D550 H630

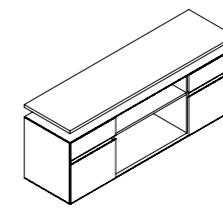


OPEN SHELF STORAGE  
W600 D500 H630

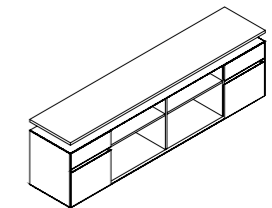
## LOWER CABINET



LOWER CABINET W/SINGLE SET OF DRAWER W/PLATE  
W1200 D500 H745

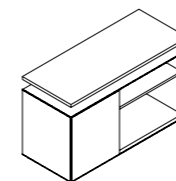


LOWER CABINET W/2 SETS OF DRAWERS W/PLATE  
W1800 D500 H745

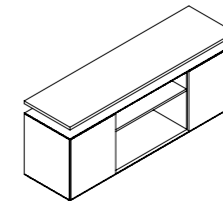


LOWER CABINET W/2 SETS OF DRAWERS W/PLATE  
W2400 D500 H745

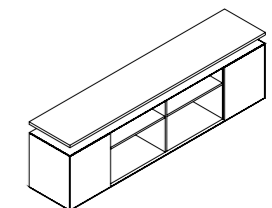
## LOWER CABINET



LOWER CABINET W/SINGLE SWING DOOR W/PLATE  
W1200 D500 H745

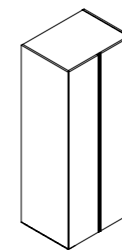


LOWER CABINET W/2 SWING DOORS W/PLATE  
W1800 D500 H745

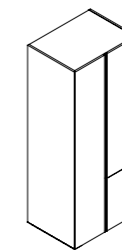


LOWER CABINET W/2 SWING DOORS W/PLATE  
W2400 D500 H745

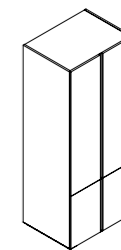
## WARDROBE / HIGH CABINET



2-DOOR WARDROBE  
W800 D600 H2000



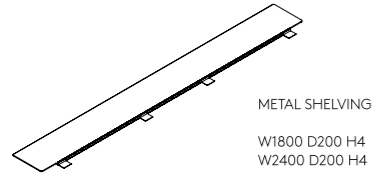
3-DOOR WARDROBE  
W800 D600 H2000



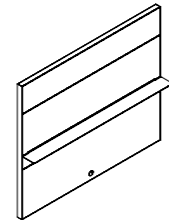
4-DOOR CABINET, W/O HANGER  
W800 D600 H2000

# Statement of Line

## ACCESSORY

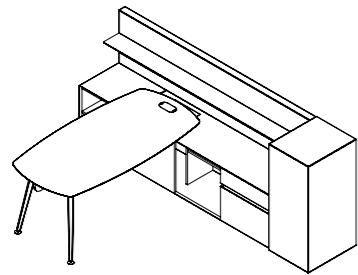


METAL SHELVING  
W1800 D200 H4  
W2400 D200 H4

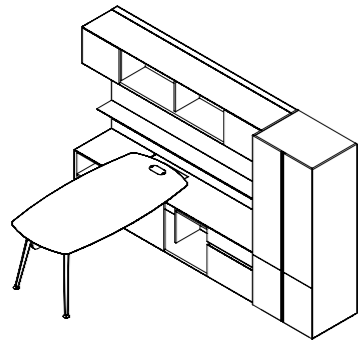


WORK WALL UNIT W/METAL SHELVING  
HANGING CABINET/LOWER CABINET  
MAIN DESK W/EXTENDED CABINET  
MAIN DESK W/SMART CABINET  
  
W1800 D280 H1200  
W2400 D280 H1200  
W1800 D280 H2000  
W2400 D280 H2000

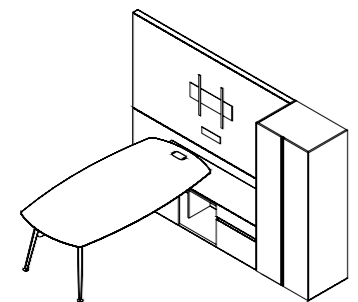
## OFFICE / EXECUTIVE MAIN DESK & CABINET SET



OFFICE: MAIN DESK W/EXTENDED CABINET AND  
LOW WALL UNIT CABINET SET  
  
OVERALL SIZE:  
W2900 D2080 H1200  
  
MAIN DESK W/EXTENDED CABINET  
WORK WALL UNIT W/METAL SHELVING  
OPEN SHELF STORAGE  
SINGLE DOOR WARDROBE  
  
OPTION(S):  
WARDROBE: 2-DOOR WARDROBE

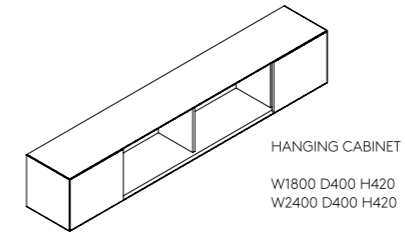


EXECUTIVE: MAIN DESK W/EXTENDED CABINET AND  
HIGH WALL UNIT CABINET SET  
  
OVERALL SIZE:  
W3200 D2080 H2000  
  
MAIN DESK W/EXTENDED CABINET  
WORK WALL UNIT W/METAL SHELVING  
HANGING CABINET  
OPEN SHELF STORAGE  
4-DOOR CABINET  
  
OPTION(S):  
WARDROBE: SINGLE 2-DOOR WARDROBE, 2-DOOR WARDROBE,  
3-DOOR WARDROBE

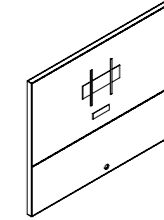


EXECUTIVE: MAIN DESK W/EXTENDED CABINET AND  
TV MOUNT WORK WALL UNIT CABINET SET  
  
OVERALL SIZE:  
W3200 D2080 H2000  
W3200 D2460 H2000  
  
MAIN DESK W/EXTENDED CABINET  
WORK WALL UNIT W/TV MOUNT  
2-DOOR WARDROBE  
  
OPTION(S):  
WARDROBE: SINGLE 2-DOOR, 3-DOOR WARDROBE,  
4-DOOR CABINET  
STORAGE: OPEN SHELF STORAGE

## ACCESSORY

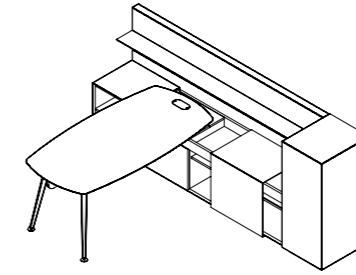


HANGING CABINET  
W1800 D400 H420  
W2400 D400 H420

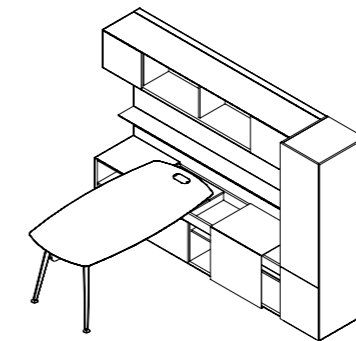


WORK WALL UNIT W/TV MOUNT  
  
OPTION(S):  
MAIN DESK W/EXTENDED CABINET  
MAIN DESK W/SMART CABINET  
  
W2400 D80 H2000

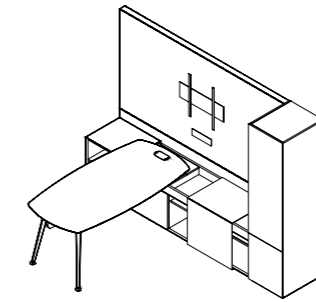
## OFFICE / EXECUTIVE MAIN DESK & CABINET SET



OFFICE: MAIN DESK W/SMART CABINET AND  
LOW WALL UNIT CABINET SET  
  
OVERALL SIZE:  
W2900 D2080 H1200  
  
MAIN DESK W/SMART CABINET W/SLIDING SURFACE  
WORK WALL UNIT W/METAL SHELVING  
OPEN SHELF STORAGE  
SINGLE DOOR WARDROBE  
  
OPTION(S):  
WARDROBE: 2-DOOR WARDROBE



EXECUTIVE: MAIN DESK W/SMART CABINET AND  
HIGH WALL UNIT CABINET SET  
  
OVERALL SIZE:  
W2900 D2080 H2000  
  
MAIN DESK W/SMART CABINET, W/SLIDING SURFACE:  
WORK WALL UNIT W/METAL SHELVING  
HANGING CABINET  
OPEN SHELF STORAGE  
SINGLE 2-DOOR WARDROBE  
  
OPTION(S):  
WARDROBE: 2-DOOR WARDROBE, 3-DOOR WARDROBE,  
4-DOOR CABINET

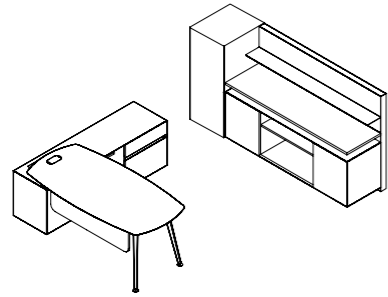


EXECUTIVE: MAIN DESK W/SMART CABINET AND  
TV MOUNT WORK WALL UNIT CABINET SET  
  
OVERALL SIZE:  
W2900 D2080 H2000  
  
MAIN DESK W/SMART CABINET, W/SLIDING SURFACE  
WORK WALL UNIT W/TV MOUNT  
OPEN SHELF STORAGE  
SINGLE 2-DOOR WARDROBE  
  
OPTION(S):  
WARDROBE: 2-DOOR WARDROBE, 3-DOOR WARDROBE,  
4-DOOR CABINET



# Statement of Line

## OFFICE / EXECUTIVE MAIN DESK & CABINET SET



### OFFICE: MAIN DESK W/EXTENDED CABINET AND LOW WALL CABINET UNIT SET

MAIN DESK W/EXTENDED SIDE CABINET:  
W2000 D1940 H748  
W2380 D1950 H748

WORK WALL UNIT W/METAL SHELVING  
LOWER CABINET W/2 SWING DOORS  
SINGLE DOOR WARDROBE

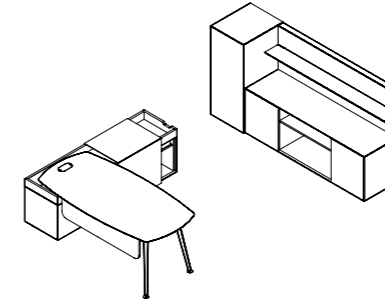
OPTION(S):  
MAIN DESK W/SIDE CABINET  
MAIN DESK W/SMART CABINET, W/SLIDING SURFACE

WALL UNIT AND CABINET

LOWER CABINET:  
LOWER CABINET W/2 SETS OF DRAWERS  
LOWER CABINET W/2 SETS OF DRAWERS W/PLATE  
LOWER CABINET W/2 SWING DOORS

WARDROBE:  
2-DOOR WARDROBE

## OFFICE DESK / EXECUTIVE DESK SET COMBINATION SET



### OFFICE: MAIN DESK W/SMART CABINET AND LOW WALL CABINET UNIT SET

MAIN DESK W/SMART CABINET W/SLIDING SURFACE:  
W2000 D1940 H748  
W2380 D2380 H748

WORK WALL UNIT W/METAL SHELVING  
LOWER CABINET W/2 SWING DOORS  
SINGLE DOOR WARDROBE

OPTION(S):  
MAIN DESK W/SIDE CABINET  
MAIN DESK W/EXTENDED CABINET

WALL UNIT AND CABINET

LOWER CABINET:  
LOWER CABINET W/2 SETS OF DRAWERS  
LOWER CABINET W/2 SETS OF DRAWERS W/PLATE  
LOWER CABINET W/2 SWING DOORS W/PLATE

WARDROBE:  
2-DOOR WARDROBE

### EXECUTIVE: OFFICE DESK SET W/EXTENDED CABINET AND HIGH WALL UNIT CABINET SET

MAIN DESK W/EXTENDED CABINET:  
W2000 D1940 H748  
W2380 D1950 H748

WORK WALL UNIT W/METAL SHELVING  
HANGING CABINET  
LOWER CABINET W/2 SWING DOORS W/PLATE  
3-DOOR WARDROBE

OPTION(S):  
MAIN DESK W/SIDE CABINET  
MAIN DESK W/SMART CABINET, W/SLIDING SURFACE

WALL UNIT AND CABINET

LOWER CABINET:  
LOWER CABINET W/2 SETS OF DRAWERS  
LOWER CABINET W/2 SETS OF DRAWERS W/PLATE  
LOWER CABINET W/2 SWING DOORS

WARDROBE:  
SINGLE 2-DOOR WARDROBE, 2-DOOR WARDROBE AND  
4-DOOR CABINET

### EXECUTIVE: MAIN DESK W/SMART CABINET AND HIGH WALL UNIT CABINET SET

MAIN DESK W/SMART CABINET W/SLIDING SURFACE  
W2000 D1940 H748  
W2380 D2380 H748

WORK WALL UNIT W/METAL SHELVING  
HANGING CABINET  
LOWER CABINET W/2 SETS OF DRAWERS W/PLATE  
SINGLE DOOR WARDROBE

OPTION(S):  
MAIN DESK W/SIDE CABINET  
MAIN DESK W/EXTENDED SIDE CABINET

WALL UNIT AND CABINET

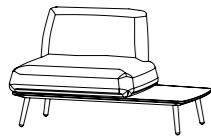
LOWER CABINET:  
LOWER CABINET W/2 SETS OF DRAWERS  
LOWER CABINET W/2 SWING DOORS  
LOWER CABINET W/2 SWING DOORS W/PLATE

WARDROBE:  
2-DOOR WARDROBE, 3-DOOR WARDROBE AND 4-DOOR CABINET

## SOFA

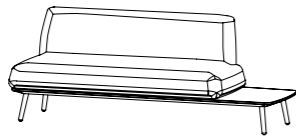
1-SEATER SOFA, W/SIDE TABLE

W955 D760 H776



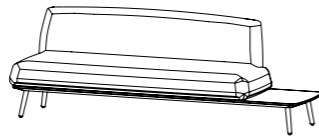
2-SEATER SOFA, W/SIDE TABLE

W1630 D760 H776



3-SEATER SOFA, W/SIDE TABLE

W2250 D760 H776



## SOFA

BENCH, W/SIDE TABLE

W1850 D720 H415



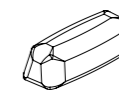
OTTOMAN

W720 D720 H415



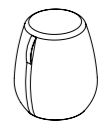
ARMREST

W370 D170 H123



STOOL

Ø467 H520



## OCCASIONAL

ROUND TABLE

Ø600 H385  
Ø750 H385



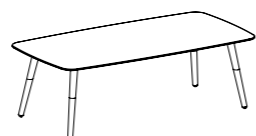
SQUARE TABLE

W600 D600 H385  
W750 D750 H385  
W750 D750 H500



RECTANGLE TABLE

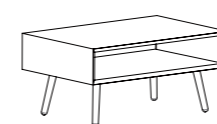
W1200 D600 H385  
W1500 D600 H385  
W1500 D600 H500



## OCCASIONAL TABLE

BOX TABLE

W500 D500 H360  
W750 D500 H360



EGG (ORGANIC) TABLE

W1120 D750 H385



Ingage: A connected and collaborative workplace



Ingage transforms any area into a multi-functional, connected workspace that suits your unique style of working, and grows with your business. From executive and conference rooms to interactive meeting areas and breakout areas, state-of-the-art facilities, designed with the health and well being of your staff in mind, promote multi-tasking, interaction and teamwork. More than a private workspace, Ingage fosters a culture of continuous learning, collaboration and mentoring to maximize efficiency throughout your office.

[www.lamex.com](http://www.lamex.com)



### Office & Showroom

#### Shanghai

5F, Tower 3, Raffles City Changning  
1193 Changning Road, Shanghai 200051  
Tel: (86) 21 6278 8888

#### Guangzhou

Unit 2, 22/F, Jun Lin Building,  
No. 285 Forest and East Road,  
Tianhe District, Guangzhou 510610  
Tel: (86) 20 3892 2422

#### Dongguan

191 Huan Shi East Road  
Tangxia Town, Dongguan City  
Guangdong Province 523712  
Tel: (86) 769 8203 1111

#### HNI Singapore

58 Duxton Road #01-01  
Singapore 089522  
Tel: (65) 6817 8750

#### Beijing

Room 1201-1202, 1209-1214,  
12/F, No. 1, Easton Centre, No.18 Guangqu Road,  
Chaoyang District, Beijing 100022  
Tel: (86) 10 8521 7588

#### Shenzhen

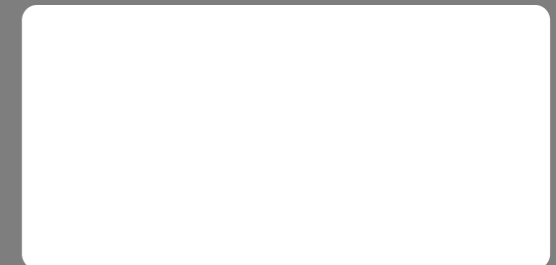
Unit 2009, Huarong Building, No.2003  
Shennan Avenue, Futian District, Shenzhen  
Shenzhen City, Guangdong Province 518000  
Tel : (86) 769 8203 1111 ext 31300

#### Hong Kong

22/F, Prosperity Millennia Plaza  
663 King's Road, North Point, Hong Kong  
Tel: (852) 2828 6888

### Service Hotline

Mainland China: (86) 800 820 6073  
Hong Kong & Asia Pacific: (852) 2828 6000



Design and specification are subjected to modification without prior notice due to continuous product improvement.