



Meta Curving Bench • 弧形长凳

Lively Modular Solutions for Today's Office

Meta Curving Bench is versatile and innovative. It is both community-friendly and space-shaping that foster social communication and informal meeting among employees. Linked easily together to form charming curves and near-complete circles, Meta's modular designs offers limitless possibilities.

灵动设计 赋活当代办公空间的模组化方案

Meta 弧形长凳组合灵动创新，功能丰富，多样可塑，能促进员工之间的社交沟通和非正式会议，为社区办公场所打造新颖时尚的空间设计。Meta 的模组化设计提供了创限的可塑性，能轻松地将模块连接在一起，创造出迷人动态的曲线组合组合，为办公场景更添姿彩，创意创限。



Pouf
大圆凳

Curving Bench
Modular
弧形凳模块



Meta Meeting Cabin
共享舱

Lively and Flexible

Inspired by creative ideas of movement, Meta Curving Bench is composed of pouf and curving bench modular element that can be connected to one another, including forming a two-third of closed circle. The possibilities are endless.

灵活与弹性

无限的创意理念启发出 Meta 弧形长凳由大圆凳及弧形凳模块元素组成，能简单地将模块连接一起，为不同办公空间创造出灵活的曲线组合和开放式的圆形组合，设计变化万千，创造出无限组合可能。

Privacy in One-on-one

Meta Meeting Cabin, a pair of cocoon-like booths, offers a unique solution to space delineation. It is your answer to focused work, private meetings and intimate discussions in open-plan office.

面对面的私密空间

Meta 共享舱是一对私密密度高的包厢，为开放式办公场所创建了“面对面”洽谈的私密空间，为规划空间的充分使用提供了独特的解决方案。Meta 共享舱能让您在开放办公环境中专注工作，进行私人会议和私密讨论，是您不二之选。



Inspired by creative ideas, Meta Curving Bench enables all types of users to relax, converse and collaborate in a fun-filled environment.

无限的创意理念启发出 Meta 弧形长凳组合的设计变化万千，动态延展，为办公空间打造了趣味生活的体验，适合不同的团队协作，享受放松的交谈与互动，促进良好的工作氛围。

Material Option 物料选择

Seat Fabric 座椅布料

Era*

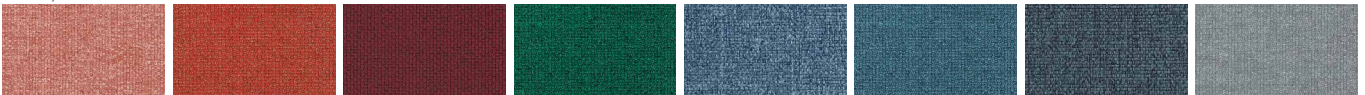


Calendar (CSE19) Date (CSE24) Turn (CSE26) Experience (CSE29) Lifetime (CSE03) Notation (CSE36) Rest (CSE37) Signature (CSE35)



Youth (CSE39) Late (CSE43) Aeon (CSE20) Chapter (CSE08) Maturity (CSE40) Present (CSE13) Generation (CSE02) Prompt (CSE45)

Medley*



63064 (MD27) 63016 (MD09) 64102 (MD29) 68070 (MD32) 66144 (MD30) 67053 (MD31) 66010 (MD17) 66008 (MD15)

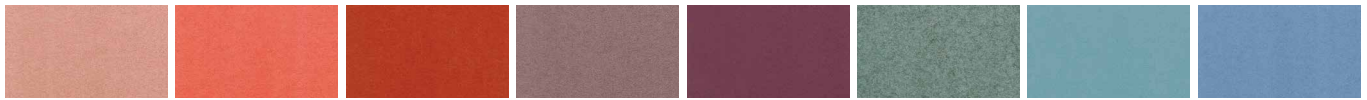


60003 (MD01) 61002 (MD04) 60167 (MD23)

Material Option 物料选择

Seat Fabric 座椅布料

Blazer

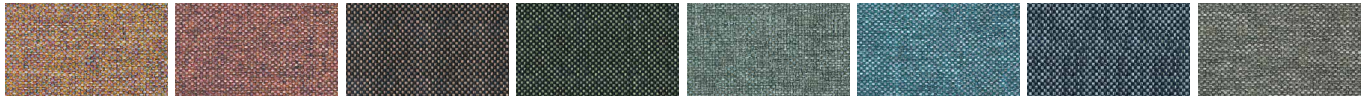


Stanford (CUZ2R) Barlborough (CUZ3D) Goldsmith (CUZ39) Scottsdale (CUZ3E) Barnard (CUZ2S) Latymer (CUZ33) Woodcroft (CUZ2Z) Marymount (CUZ3C)



Cardiff (CUZ1N) Glensalmond (CUZ62) Bromsgrove (CUZ35) Fairfield (CUZ47) Surrey (CUZ1E)

Rivet



Molten (EGL09) Forge (EGL12) Woodrose (EGL33) Hemlock (EGL34) Tensile (EGL20) Quench (EGL23) Crucible (EGL24) Gaivanise (EGL26)



Grey Brindle (EGL50)

Silex

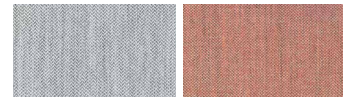


SX02 SX88 SX08 SX53 SX10

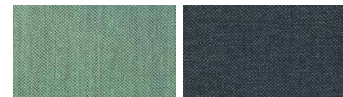


SX33 SX70 SX12 SX30

Vico



VC03 VC41



VC17 VC25

Artificial Leather 仿皮 - L380 Apply to X-Chair and Y-Chair only 只适用于X座椅与Y座椅



White (G33) Cream (G35) Red (G38) Brown (G2) Black (G8)

True Leather 真皮 - Apply to X-Chair and Y-Chair only 只适用于X座椅与Y座椅

Half Leather 半真皮 - L680/ Full Leather 全真皮- L980 Half Leather 半真皮 - L600



White (B33) Cream (B35) Red (B38) Brown (D2) Black (G8)

Remarks 备注:

* Single color or dual color combination is available for options.
含单色及双色搭配，以供选择。

Colour variation may occur on printed matters. Please refer to swatch cards or actual product sample. More fabric and leather colors are available for selection in Lamex Material Booklet.
颜色可能因印刷效果而出现差异，因此以色卡或真实样本为准。美时物料系列手册提供更多标准布料和皮革颜色，以供选择。



Office & Showroom 分行及展厅

Shanghai 上海
Tel: (86) 21 6278 8888

Beijing 北京
Tel: (86) 10 8521 7588

Guangzhou 广州
Tel: (86) 20 3892 2422

Shenzhen 深圳
Tel: (86) 769 8203 1111 ext 31300

Dongguan 东莞
Tel: (86) 769 8203 1111

Chongqing 重庆
Tel: (86) 23 6711 3598

Hong Kong 香港
Tel: (852) 2828 6888

HNI Singapore 新加坡
Tel: (65) 6817 8750

Customer Service Hotline 客户服务热线

Mainland China 中国大陆
Tel: (86) 800 820 6073 | (86) 400 686 8073

Hong Kong & Asia Pacific 香港及亚太区
Tel: (852) 2828 6000

www.lamex.com