



Voila

Stylish Appeal



Industrial Designer
Wolfgang Deisig



To renowned German industrial designer, Wolfgang Deisig, a chair is the centerpiece and brings comfort to every workplace.

“A chair should be like a comfortable jacket ” said Deisig.

“ You slip into it and it feels good.”

Stylish Appeal and Sleek Design

Voila is a stylish contemporary chair that combines appealing aesthetics and a functional form, for a quality take on chic and tasteful furnishings. Its entire design has been considered, and every detail of the chair has been made with purpose in mind. Comfort comes first, with its ergonomically focused shape optimized to suit your every need.



A wide selection of fabrics and meshes, blended against either a grey-frame or black-frame lumbar support, allows you mix things up for bold looks that quietly complement.

Workplace Aesthetics

Design, quality and price all combine in Voila, a smart choice that blends superior construct with technological innovation for a swivel chair unlike any other. It's made for all types of workplace and has been created specifically for those who spend long hours at their desk, offering comfort and convenience within its harmonious aesthetic.





An Ergonomic Combination

Voila is made for matching, both for bodily comfort and its many complementary workspace furnishings. Voila can be paired with a height-adjustable table, offering the ideal combination to balance efficiency, productivity and workplace wellbeing. It's also suited to a wide-range of offices, presenting an ergonomic base for demanding business operations.



Your Small Solution to Meetings

Voila chairs are the perfect fit for small work spaces, presenting a well-suited solution that facilitates both the exchange of information and workplace communication. Individual space is fully embraced while groups are always engaged.

Product Highlight



Synchronized Mechanism
Synchronized mechanism offers healthy support for all seated positions. Easy recline at different angles is offered through the tension lock.



3D Adjustable Armrest
Adjustable armrests offer enduring support for every position along the axis: up and down, back and forth, left and right.



Adjustable Seat Depth
Adjustable seat up to 5cm allows for optimal legroom, aiding blood circulation and avoiding bothersome pins and needles.

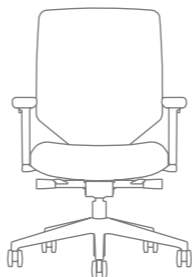


Comfortable Cushioned Seat
The cushioned seat is made up of high-density molded cotton foam, offering endless comfort by dispersing pressure along thighs and hips.



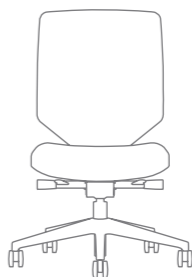
Adjustable Lumbar Support
Adjustable lumbar support is made for every type of body, adjustable along the lumbar area, up to 6cm in height and depth.

Statement of Line



Voila with Adjustable Armrest

Mechanism	Synchronized
Frame Color	Black/Grey
Height	920mm - 1010mm
Depth	740mm
Width	740mm
Seating Height	400mm - 490mm
Seating Depth	400mm - 470mm
Seating Width	500mm



Voila without Armrest

Mechanism	Synchronized
Frame Color	Black/Grey
Height	920mm - 1010mm
Depth	740mm
Width	740mm
Seating Height	400mm - 490mm
Seating Depth	400mm - 470mm
Seating Width	500mm

Material Option

Mesh



White MC04



Green MC03



Red MC02

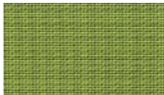


Black MC01

Fabric



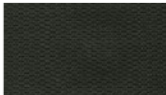
Iglool NW31



Carambola BF22



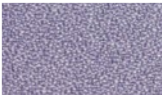
Volcano SC08



Pitch BF08



Greenland NW33

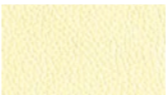


Lavender NW57



Iceberg NW59

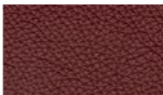
Leather



White B33



Egg Shell B35



Demi Red B38



Brown D2



Black B8

Frame Color



Grey



Black

Certifications



GREENGUARD GOLD Indoor Air Quality Certification

Remarks
Color variation may occur on printed matters. Please refer to swatch card or actual product sample.
More material color options are available for selection in Lamex material booklet and actual swatch cards.



Office & Showroom

Shanghai

5F, Tower 3, Raffles City Changning
1193 Changning Road, Shanghai 200051
Tel: (86) 21 6278 8888

Beijing

Room 1201-1202, 1209-1214,
12/F, No. 1, Easton Centre, No.18 Guangqu Road,
Chaoyang District, Beijing 100022
Tel: (86) 10 8521 7588

Guangzhou

Unit 2, 22/F, Jun Lin Building,
No. 285 Forest and East Road,
Tianhe District, Guangzhou 510610
Tel: (86) 20 3892 2422

Shenzhen

Unit 2009, Huarong Building, No.2003
Shennan Avenue, Futian District, Shenzhen
Shenzhen City, Guangdong Province 518000
Tel : (86) 769 8203 1111 ext 31300

Dongguan

191 Huan Shi East Road
Tangxia Town, Dongguan City
Guangdong Province 523712
Tel: (86) 769 8203 1111

Hong Kong

22/F, Prosperity Millennia Plaza
663 King's Road, North Point, Hong Kong
Tel: (852) 2828 6888

HNI Singapore

100H Pasir Panjang Road #05-03
OC@Pasir Panjang Singapore 118524
Tel: (65) 6817 8750

Service Hotline

Mainland China: (86) 800 820 6073 | (86) 400 686 8073
Hong Kong & Asia Pacific: (852) 2828 6000



Website



WeChat

Design and specification are subjected to modification without prior notice due to continuous product improvement.