

# Sven



Lamex

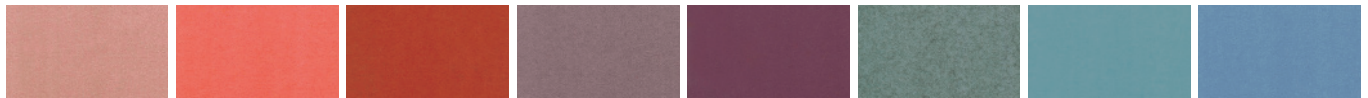
Product 产品	Width 宽度 (mm)	Depth 深度 (mm)	Height 高度 (mm)	Seat Color 座椅颜色	Material 物料
1-Seater Sofa 1 座位沙发	760	800	1080	35 Fabric Colors and 6 Leather Colors Option 35 种布料颜色及 6 种皮革 颜色选择	Fabric, Leather & Solid Wood 布料、皮革及实木



## Material Option 物料选择

Seat Fabric 布料

Blazer

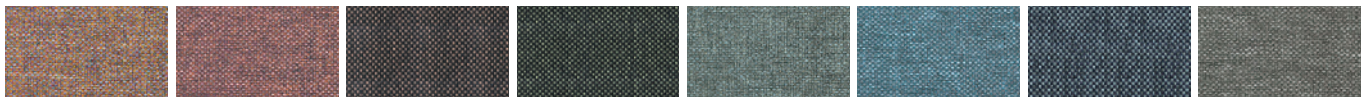


Stanford (CUZ2R) Barlborough (CUZ3D) Goldsmith (CUZ39) Scottsdale (CUZ3E) Barnard (CUZ2S) Latymer (CUZ33) Woodcroft (CUZ2Z) Marymount (CUZ3C)



Cardiff (CUZ1N) Glendmond (CUZ62) Bromegrove (CUZ35) Fairfield (CUZ47) Surrey (CUZ1E)

Rivet



Molten (EGL09) Forge (EGL12) Woodrose (EGL33) Hemlock (EGL34) Tensile (EGL20) Quench (EGL23) Crucible (EGL24) Galvanise (EGL26)

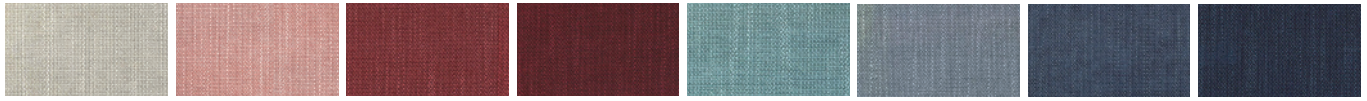


Grey Brindle (EGL50)

## Material Option 物料选择

### Seat Fabric 座椅布料

#### Silex



SX02

SX88

SX08

SX53

SX10

SX33

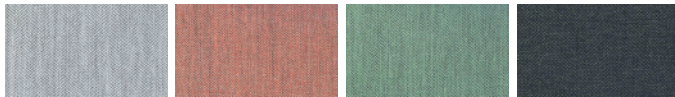
SX70

SX12



SX30

#### Vico



VC03

VC41

VC17

VC25

### Faux Leather 仿皮



Cream (VL02)

Warm Grey (VL03)

Butterscotch (VL04)

Cognac (VL06)

Steel (VL05)

Black (VL01)

### Solid Wood 实木



Beech (BE)  
榉木

White Oak (WO)  
白橡木

Dark Hevea (DW)  
深胶木

Black Ash (BA)  
黑白蜡木

#### Remarks 备注:

Color variations may occur on soft copies or printed matters. Please refer to swatch cards or actual product samples for color selection.  
颜色可能因电子档或印刷效果而出现差异，当选择颜色时，可参考色卡或真实样本。



### Office & Showroom 分行及展厅

Shanghai 上海  
Tel: (86) 21 6278 8888

Beijing 北京  
Tel: (86) 10 8521 7588

Guangzhou 广州  
Tel: (86) 20 3892 2422

Shenzhen 深圳  
Tel: (86) 769 8203 1111 ext 31018

Dongguan 东莞  
Tel: (86) 769 8203 1111

Hong Kong 香港  
Tel: (852) 2828 6888

Singapore 新加坡  
Tel: (65) 6817 8750

### Customer Service Hotline 客户服务热线

Mainland China 中国大陆  
Tel: (86) 800 820 6073 | (86) 400 686 8073

Hong Kong & Asia Pacific 香港及亚太区  
Tel: (852) 2828 6000

[www.lamex.com](http://www.lamex.com)